

# | 2020 | Injuries Data Brief



## Key Findings from 2018 Guilford County Injury Data

*A note on data in this report: The processing requirements of birth and death certificate records results in a delay in public availability of the data.*

- In 2018, the overall leading cause of injury deaths was unintentional poisoning, followed by unintentional falls, motor vehicle injury deaths, suicide and homicide.
- Unintentional poisoning deaths (113 in 2018) were due primarily to adverse reactions to prescription and non-prescription use of opioid drugs.
- Deaths due to motor vehicle crashes, which have shown an increasing trend since 2011, stayed the same rate between 2017 and 2018.
- Mortality rates due to non-motor vehicle-related injuries in Guilford County and North Carolina continued to increase.
- Homicide deaths have been on the increase since 2009. Those most at risk of homicide are young adults ages 25-34.
- While suicide deaths declined from 2015 to 2016, they have since continued to increase in both 2017 and 2018.
- Firearms were used in most suicides and homicides.
- Opioid overdose Emergency Department visits declined slightly between 2018 and 2019, from 261 to 257.

## Inside this Data Brief

Key Findings	1
Leading Causes of Injury Mortality	2
Leading Causes of Injury Mortality by Sex	2
Leading Causes of Injury Mortality by Race and Ethnicity	3
Detailed Causes of Injury Mortality	4-5
Opioid Drug Trends, Quarterly	6
Opioid Drug Trends, Annual	6
Injury Mortality by Age Group	7
Motor and Non-Motor Vehicle Injury Mortality Trends	8
Suicide Mortality Trends	8
Homicide and Suicide Mortality Trends	8

This report was prepared by Health Surveillance & Analysis Unit of the Division of Public Health:

Mark H. Smith, Ph.D., Epidemiologist

Laura Mroska, MPH, MSW, Community Health Educator

For more information about Guilford County health statistics, visit:

[www.guilfordcountync.gov/our-county/human-services/health-department/health-statistics](http://www.guilfordcountync.gov/our-county/human-services/health-department/health-statistics).

## Leading Causes of Injury Mortality and Rates per 100,000 Guilford County, 2014-2018

### All Residents

Injury Type	2014		2015		2016		2017		2018	
	Number	Rate	Number	Rate	Number	Rate	Number	Rate	Number	Rate
Motor Vehicle Injury	53	10.3	53	10.2	57	10.9	71	13.4	72	13.5
Unintentional Falls	74	14.4	77	14.9	83	15.8	67	12.7	84	15.7
Suicide, Self-Inflicted Injury	43	8.4	71	13.7	60	11.4	63	11.9	69	12.9
Homicide	28	5.5	39	7.5	44	8.4	51	9.6	51	9.6
Unintentional Poisoning	51	10.0	62	12.0	95	18.1	118	22.3	113	21.2
Unintentional Death by Fire	4	0.8	1	0.2	5	1.0	2	0.4	8	1.5
Guilford County Population	512,275		517,414		525,055		529,496		533,670	

Source: North Carolina Department of Health and Human Services, Division of Public Health. State Center for Health Statistics.

## Leading Causes of Injury Mortality and Rates per 100,000 by Sex Guilford County, 2014-2018

### Female Residents

Injury Type	2014		2015		2016		2017		2018	
	Number	Rate	Number	Rate	Number	Rate	Number	Rate	Number	Rate
Motor Vehicle Injury	8.0	3.0	14	5.1	19	6.9	18	6.5	23	8.2
Unintentional Falls	44.0	16.3	47	17.3	50	18.1	34	12.2	43	15.3
Suicide, Self-Inflicted Injury	11.0	4.1	15	5.5	18	6.5	13	4.7	15	5.3
Homicide	8.0	3.0	7	2.6	6	2.2	10	3.6	9	3.2
Unintentional Poisoning	17.0	6.3	17	6.2	29	10.5	36	12.9	38	13.5
Unintentional Death by Fire	1.0	0.4	1	0.4	3	1.1	0	0.0	4	1.4
Female Population	269,570		272,096		276,311		278,877		280,983	

### Male Residents

Injury Type	2014		2015		2016		2017		2018	
	Number	Rate	Number	Rate	Number	Rate	Number	Rate	Number	Rate
Motor Vehicle Injury	45	18.5	39	15.9	38	15.3	53	21.1	49	19.4
Unintentional Falls	30	12.4	30	12.2	33	13.3	33	13.2	41	16.2
Suicide, Self-Inflicted Injury	32	13.2	56	22.8	42	16.9	50	20.0	54	21.4
Homicide	20	8.2	32	13.0	38	15.3	41	16.4	42	16.6
Unintentional Poisoning	34	14.0	45	18.3	66	26.5	82	32.7	75	29.7
Unintentional Death by Fire	3	1.2	0	0.00	2	0.8	2	0.8	4	1.6
Male Population	242,705		245,414		248,744		250,619		252,687	

Source: North Carolina Department of Health and Human Services, Division of Public Health. State Center for Health Statistics.

## Leading Causes of Injury Mortality and Rates per 100,000, by Race Guilford County, 2014-2018

### White Residents

Injury Type	2014		2015		2016		2017		2018	
	Number	Rate	Number	Rate	Number	Rate	Number	Rate	Number	Rate
Motor Vehicle Injury	29	10.1	32	10.5	33	10.8	31	10.1	31	10.2
Unintentional Falls	63	22.0	66	21.8	74	24.2	56	18.3	71	23.2
Suicide, Self-Inflicted Injury	34	11.9	62	20.4	53	17.4	50	16.4	55	18.0
Homicide	5	1.7	6	2.0	6	2.0	8	2.6	10	3.3
Unintentional Poisoning	40	14.0	46	15.2	72	23.6	96	31.4	91	29.8
Unintentional Death by Fire	2	0.7	1	0.3	4	1.3	2	0.7	2	0.6
Population	302,948		303,419		305,425		305,444		305,332	

### African-American Residents

Injury Type	2014		2015		2016		2017		2018	
	Number	Rate	Number	Rate	Number	Rate	Number	Rate	Number	Rate
Motor Vehicle Injury	17	9.4	18	9.8	19	10.1	30	15.7	31	16.0
Unintentional Falls	10	5.6	9	4.9	9	4.8	9	4.7	11	5.7
Suicide, Self-Inflicted Injury	8	4.4	5	2.7	4	2.1	11	5.8	12	6.2
Homicide	21	11.7	29	15.8	34	18.1	42	22.0	40	20.6
Unintentional Poisoning	9	5.0	11	6.0	21	11.2	18	9.4	21	10.8
Unintentional Death by Fire	1	0.6	0	0.0	1	0.5	0	0.0	6	3.1
Population	179,981		183,433		187,728		190,736		193,628	

### Asian and Hispanic Residents, 2018

Injury Type	Asian	Hispanic
	Number	Number
Motor Vehicle Injury	10	7
Unintentional Falls	2	2
Suicide, Self-Inflicted Injury	12	4
Homicide and Intentional Injury	1	1
Unintentional Poisoning	1	1
Unintentional Death by Fire	0	0

Note: Not calculated for Asian and Hispanic residents due to small numbers.

Source: North Carolina Department of Health and Human Services, Division of Public Health. State Center for Health Statistics.

## Detailed External Injury Causes of Mortality, 2018

ICD-10 Cause of Death Codes	Cause of Death Description	Number of Deaths
<b>Deaths due to Motor Vehicle and other Transport-Related Injuries</b>		
<b>V00-V99</b>	<b>Transport Accidents</b>	<b>74</b>
V00-V09	Pedestrian injured in transport accident	13
V20-V29	Motorcycle rider injured in transport accident	7
V40-V49	Car occupant injured in transport accident	6
V60-V69	Occupant of heavy transport vehicle injured in transport accident	2
V80-V89	Other land transport accidents	46
<b>Deaths due to Falls</b>		
<b>W00-W19</b>	<b>Deaths due to Falls</b>	<b>84</b>
W01	Fall from slipping, tripping or stumbling	4
W06	Fall from bed	7
W07	Fall from chair	2
W08	Fall from other furniture	1
W10	Fall from stairs or steps	3
W13	Fall from building or structure	1
W17	Fall from one level to another	1
W18	Other slipping, tripping, stumbling and falls	17
W19	Unspecified fall	48
<b>Exposure to Inanimate Mechanical Forces</b>		
W20	Struck by thrown, projected or falling object	2
W22	Striking against or struck by other objects	2
W34	Accidental discharge and malfunction from other unspecified firearms and guns	1
<b>Deaths Due to Drowning and other Unintentional Threats to Breathing</b>		
W67	Accidental drowning and submersion while in swimming pool	1
W69	Accidental drowning and submersion while in natural water	1
W75	Accidental suffocation and strangulation in bed	1
W76	Accidental hanging and strangulations	2
W78	Inhalation of gastric contents	1
W79	Inhalation and ingestion of food causing obstruction of respiratory tract	5
W80	Inhalation and ingestion of other objects causing obstruction of respiratory tract	13
<b>Exposure to Smoke, Fire and Flames</b>		
X00	Exposure to uncontrolled fire in building or structure	8
X10	Contact with hot drinks, food, fats and cooking oils	1
<b>Exposure to Forces of Nature</b>		
X31	Exposure to excessive natural cold	1

ICD-10 Cause of Death Codes	Cause of Death Description	Number of Deaths
<b>Deaths due to Unintentional Poisoning by and Exposure to Noxious Substances</b>		
<b>X40-X49</b>	<b>Accidental poisoning by and exposure to noxious substances</b>	<b>113</b>
X41	Accidental poisoning by and exposure to antiepileptic, sedative-hypnotic, antiparkinsonism and psychotropic drugs	3
X42	Accidental poisoning by and exposure to narcotics and psychodysleptics [hallucinogens], Not Elsewhere Classified (NEC)	59
X44	Accidental poisoning by and exposure to other and unspecified drugs, medicaments and biological substances	48
X47	Accidental poisoning by and exposure to other gases and vapors	3
<b>Deaths due to Suicide</b>		
<b>X60-X84</b>	<b>Intentional self-harm</b>	<b>69</b>
X61	Intentional self-poisoning by & exposure to antiepileptic, sedative-hypnotic, anti-parkinsons and psychotropic drugs	2
X62	Intentional self-poisoning by and exposure to narcotics and psychodysleptics [hallucinogens], NEC	2
X64	Intentional self-poisoning by and exposure to other & unspecified drugs, medicaments and biological substances	5
X67	Intentional self-poisoning by and exposure to other gases and vapors	1
X70	Intentional self-harm by hanging, strangulation and suffocation	22
X72	Intentional self-harm by handgun discharge	3
X73	Intentional self-harm by rifle, shotgun and larger	4
X74	Intentional self-harm by other and unspecified firearm and gun discharge	28
X78	Intentional self-harm by sharp object	1
X80	Intentional self-harm by jumping from a high place	1
<b>Deaths due to Homicide</b>		
<b>X85-Y09</b>	<b>Assault</b>	<b>51</b>
X93	Assault by handgun discharge	2
X94	Assault by rifle, shotgun and larger firearm discharge	2
X95	Assault by other and unspecified firearm discharge	40
X99	Assault by sharp object	2
Y09	Assault by unspecified means	4
Y87.1	Sequelae of intentional self-harm, assault and events of undetermined intent	1

Source: Detailed Mortality Statistics, North Carolina Residents, 2014, NC State Center for Health Statistics.

## Opioid Drug Trends in Guilford County: Quarterly Data

	Oct-Dec 2017	Jan-Mar 2018	Apr-Jun 2018	Jul-Sept 2018	Oct-Dec 2018	Jan-Mar 2019	Apr-Jun 2019	Jul-Sept 2019	Oct-Dec 2019
<b>Heroin Overdose ED Visits</b>	94	41	30	54	47	45	52	47	32
<b>Opioid Overdose ED Visits</b>	115	70	57	71	60	69	66	70	52
<b>Heroin-Related ED Visits</b>	233	160	198	229	170	159	219	217	157

<sup>1</sup>Source: NC DETECT (NC Disease Event Tracking and Epidemiologic Collection Tool).

## Opioid Drug Trends in Guilford County: Annual Data Trends: 2012-2019

	2012	2013	2014	2015	2016	2017	2018	2019
<b>Heroin Overdose ED Visits<sup>1</sup></b>	36	70	191	107	156	291	173	176
<b>Opioid Overdose ED Visits<sup>1</sup></b>	119	184	305	243	263	390	261	257
<b>Heroin-Related ED Visits<sup>1</sup></b>	178	104	234	180	611	1,009	750	752
<b>Opiate Poisoning Deaths<sup>2,3</sup></b>	32	17	42	47	71	99	98	NA
<b>Heroin Poisoning Deaths<sup>2,4</sup></b>	9	9	25	23	40	29	40	NA
<b>Synthetic Opioid Poisoning Deaths<sup>2,5</sup></b>	1	1	18	11	34	84	72	NA

<sup>1</sup>Source: NC DETECT (NC Disease Event Tracking and Epidemiologic Collection Tool), Emergency Department data.

<sup>2</sup>Source: Injury and Violence Prevention Branch, NCDHHS.

<sup>3</sup>Cause of Death Codes used: Any mention (cod1-cod21) of T40.0 (Opium), T40.1 (Heroin), T40.2 (Other Opioids), T40.3 (Methadone) and/or T40.4 (Other synthetic opioid).

<sup>4</sup>Cause of Death Codes used: Any mention (cod1-cod21) of T40.1 (Heroin).

<sup>5</sup>Cause of Death Codes used: Any mention (cod1-cod21) of T40.4 (Other Synthetic Opioids).

## Characteristics of Cases: Opioid Overdose Emergency Department Visits January 01-December 31, 2019

Characteristic	Number	Percent
<b>Patient City/Location</b>		
Greensboro	119	46.3%
High Point	62	24.1%
Archdale	13	5.1%
Pleasant Garden	11	4.3%
Jamestown	9	3.5%
Stokesdale	7	2.7%
Other	36	14.2%
<b>Patient Sex</b>		
Male	158	61.5%
Female	99	38.5%
<b>Patient Race/Ethnicity</b>		
White	213	82.9%
African American	36	14.0%
Other	8	3.1%
Hispanic (can be of any race)	2	0.8%
<b>Patient Age Group</b>		
Ages 0-9	4	1.6%
Ages 10-19	6	2.3%
Ages 20-29	77	30.0%
Ages 30-39	68	26.5%
Ages 40-49	42	16.3%
Ages 50-59	38	14.8%
Ages 60 and Over	22	8.6%
<b>Total</b>	<b>257</b>	<b>100.0</b>

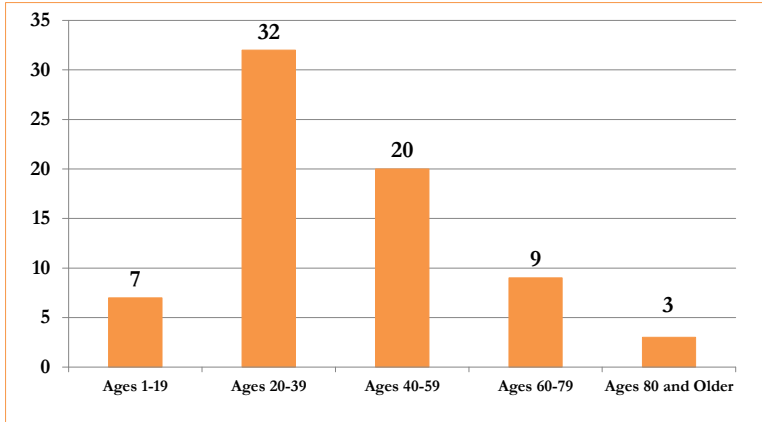
<sup>1</sup>Source: NC DETECT (NC Disease Event Tracking and Epidemiologic Collection Tool).

Data prepared by the Guilford County Department of Health and Human Services, Division of Public Health.

## Injury Mortality by Age Group

### Motor Vehicle Injury Deaths by Age Group Guilford County, 2018

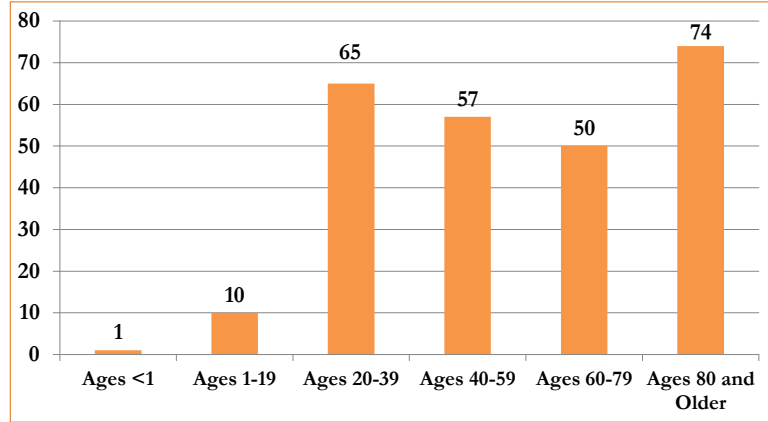
Number of Deaths



Source: Data provided by the NC Center for Health Statistics.  
Chart prepared by the GCDHHS, Division of Public Health.

### Non-Motor Vehicle Injury Deaths by Age Group Guilford County, 2018

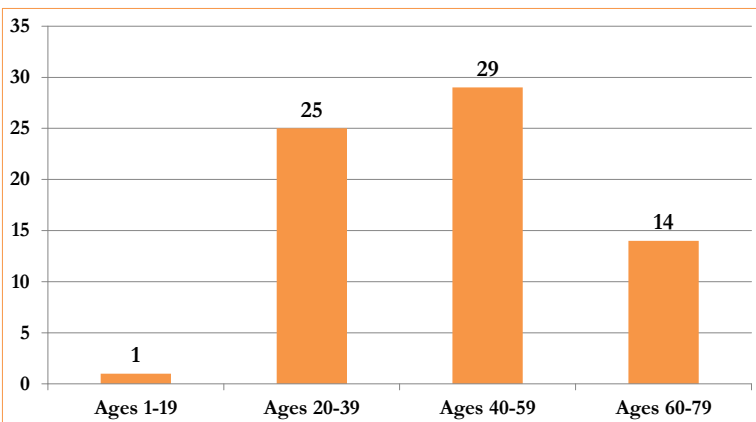
Number of Deaths



Source: Data provided by the NC Center for Health Statistics.  
Chart prepared by the GCDHHS, Division of Public Health.

### Suicide Deaths by Age Group Guilford County, 2018

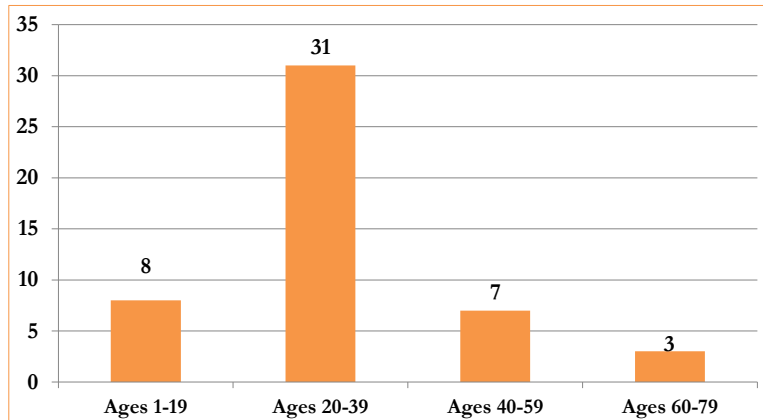
Number of Deaths



Source: Data provided by the NC Center for Health Statistics.  
Chart prepared by the GCDHHS, Division of Public Health.

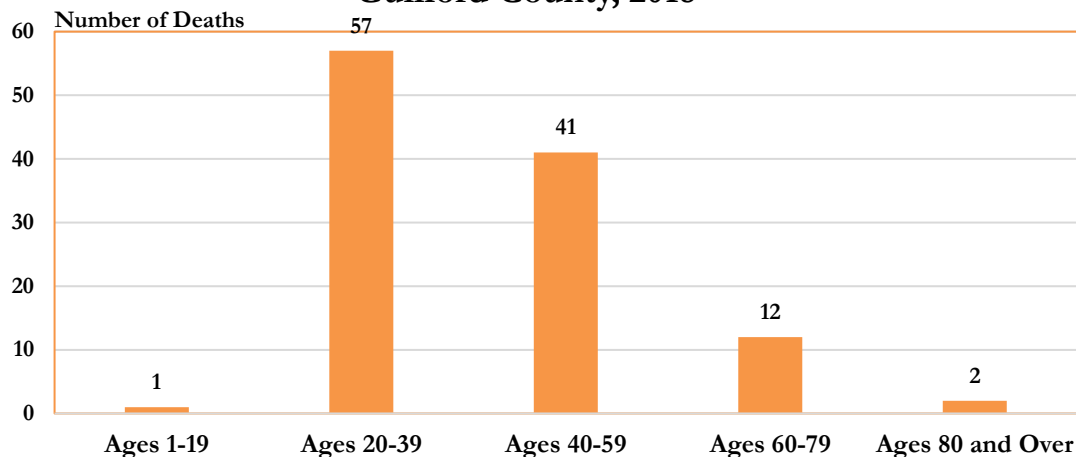
### Homicide Deaths by Age Group Guilford County, 2018

Number of Deaths



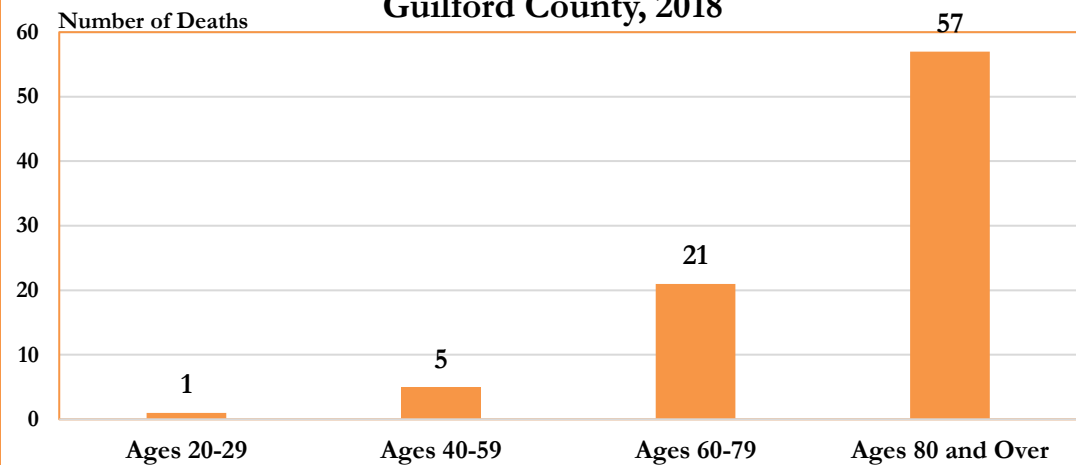
Source: Data provided by the NC Center for Health Statistics.  
Chart prepared by the GCDHHS, Division of Public Health.

### Deaths due to Unintentional Poisoning, by Age Group, Guilford County, 2018



Source: Data provided by the NC Center for Health Statistics.  
Chart prepared by the GCDHHS, Division of Public Health.

### Deaths Due to Falls, by Age Group, Guilford County, 2018

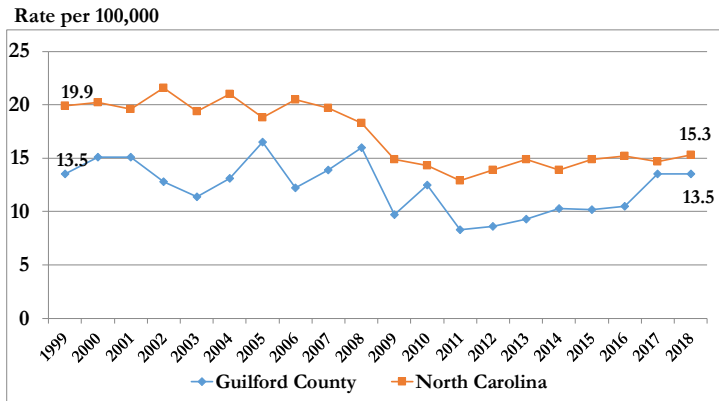


Source: Data provided by the NC Center for Health Statistics.  
Chart prepared by the GCDHHS, Division of Public Health.



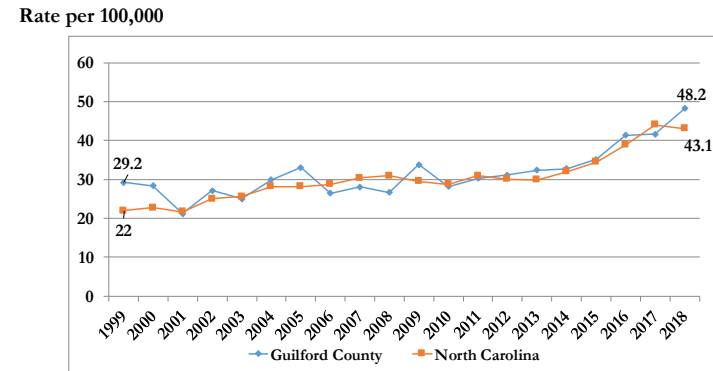
## Injury Mortality Trends

### Motor Vehicle Injury Mortality, Guilford County and NC, 1999-2018



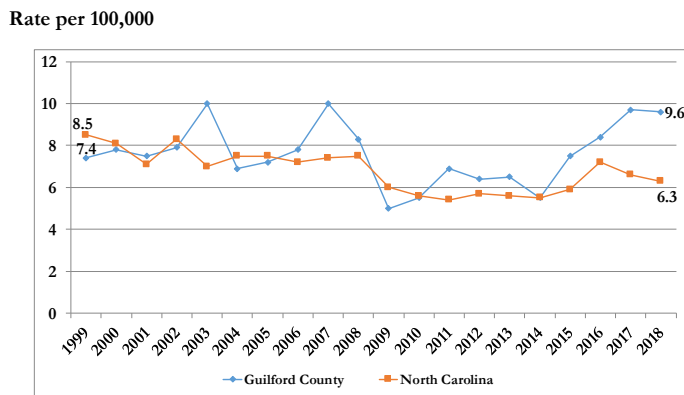
Source: Data provided by the NC Center for Health Statistics.  
Chart prepared by the GCDHHS, Division of Public Health.

### Mortality Due to Unintentional Injury other than Motor Vehicle Injury, Guilford County and NC, 1999-2018



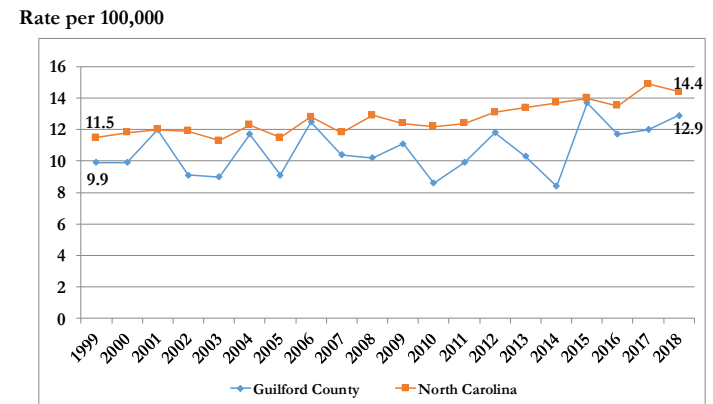
Source: Data provided by the NC Center for Health Statistics.  
Chart prepared by the GCDHHS, Division of Public Health.

### Homicide Mortality, Guilford County and NC, 1999-2018



Source: Data provided by the NC Center for Health Statistics.  
Chart prepared by the GCDHHS, Division of Public Health.

### Suicide Mortality, Guilford County and NC, 1999-2018



Source: Data provided by the NC Center for Health Statistics.  
Chart prepared by the GCDHHS, Division of Public Health.