



every baby
guilford

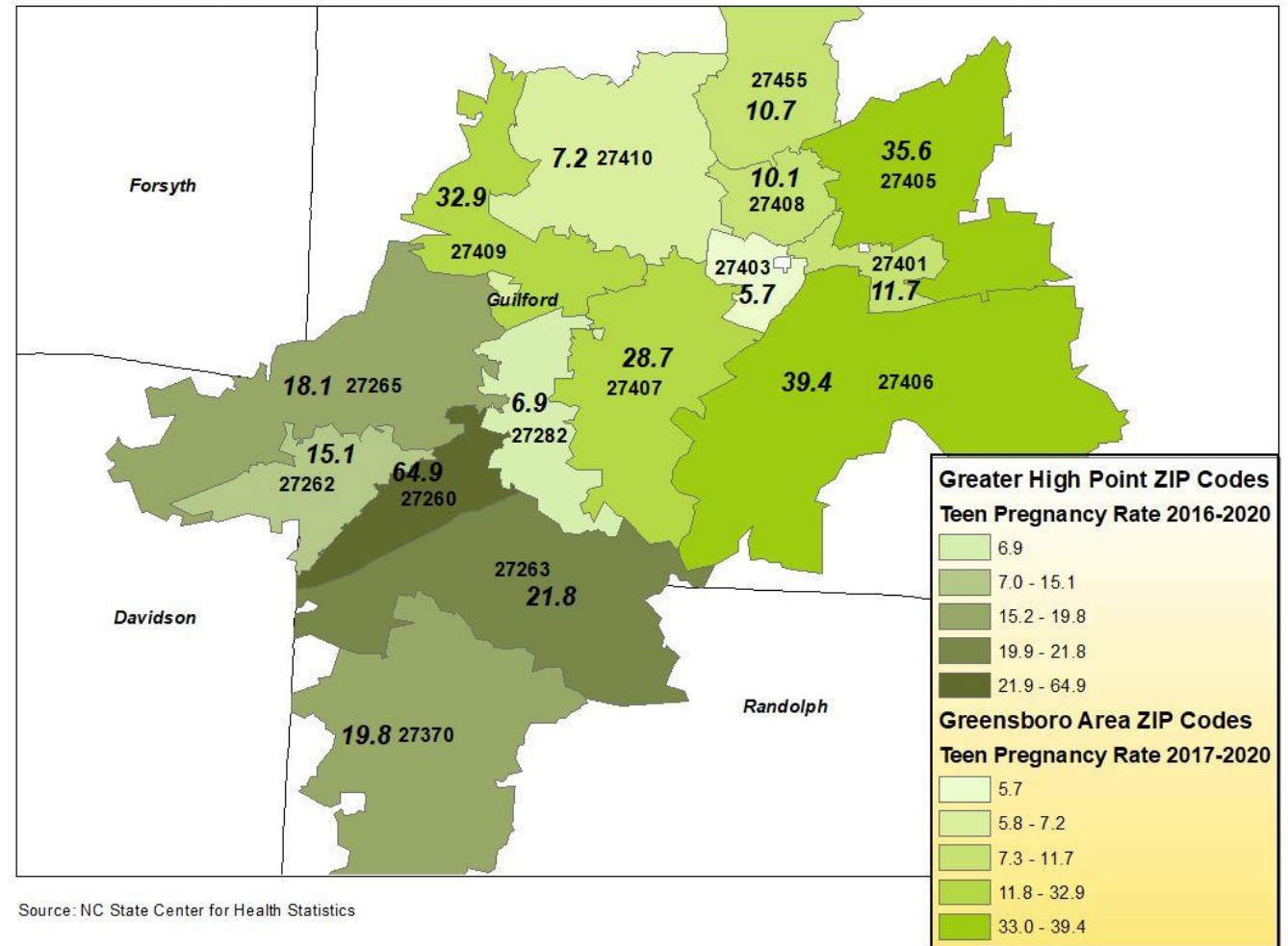
Birth Outcomes comparing Greater High Point and Greensboro Area ZIP Codes

Teen Pregnancy, Preterm
Birth, Low Birthweight, and
Infant Mortality

Teen Pregnancy

- Among Greater high Point ZIP Codes, 27260 had by far the highest five-year teen pregnancy rates, at 64.9 per 1,000 teens ages 15-19.
- The highest rates among Greensboro area ZIP codes are in 27406 (39.4) and 27405 (35.6).
- The five-year (2016-2020) teen pregnancy rate in Guilford County was 20.8.

Teen Pregnancy Rates, Greater High Point and Greensboro Area ZIP Codes

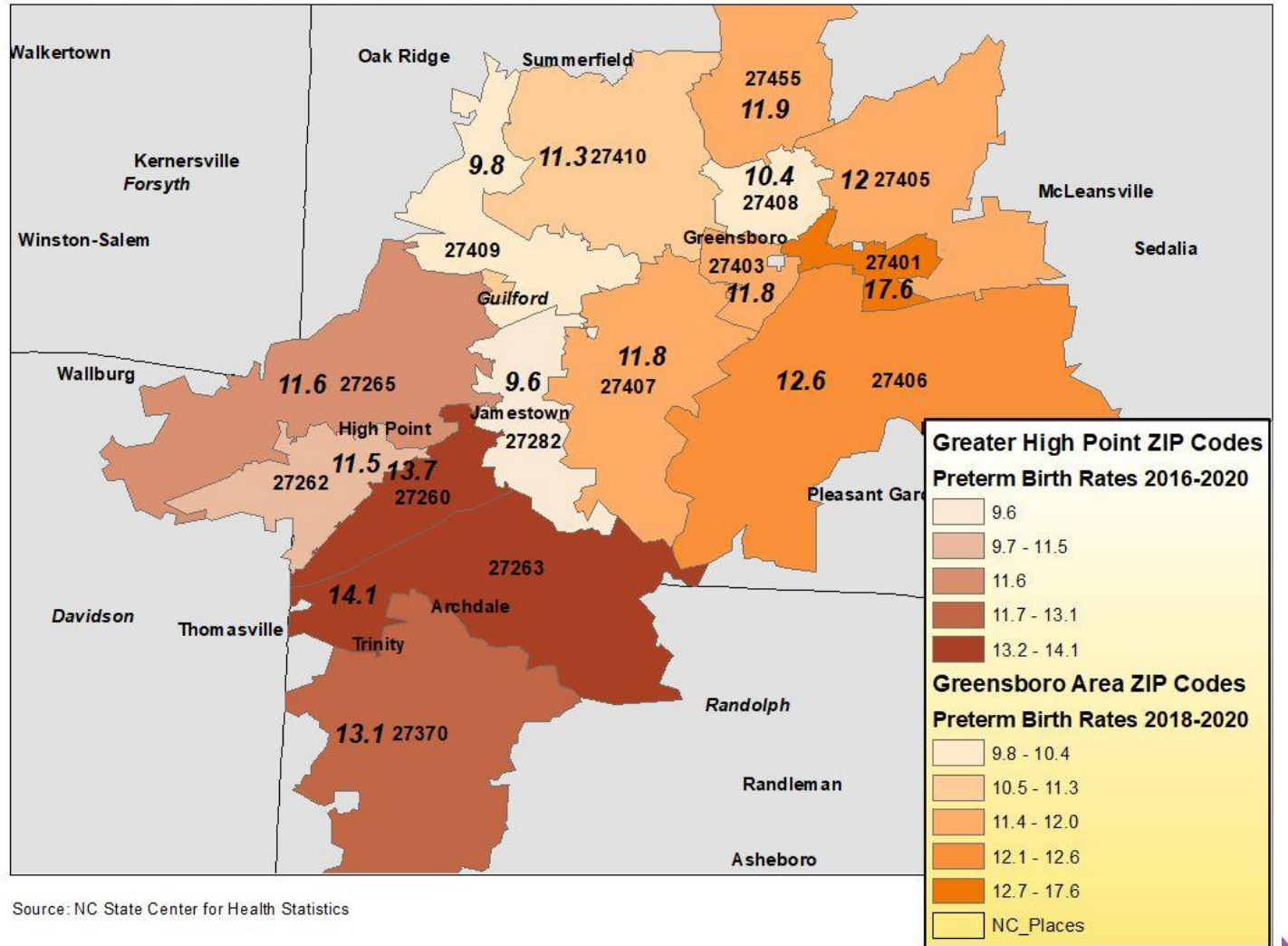


Source: NC State Center for Health Statistics

Preterm Births

- Among Greater High Point ZIP Codes, 27263 (14.1) and 27260 (13.7) had the highest five-year preterm birth rates .
- The highest rates among Greensboro area ZIP codes were in ZIP Code 27401 (17.1, 3-year rate)
- This compares with the 2020 preterm rate for Guilford County overall at 11.9.

Preterm Birth Rates, Greater High Point and Greensboro Area ZIP Codes

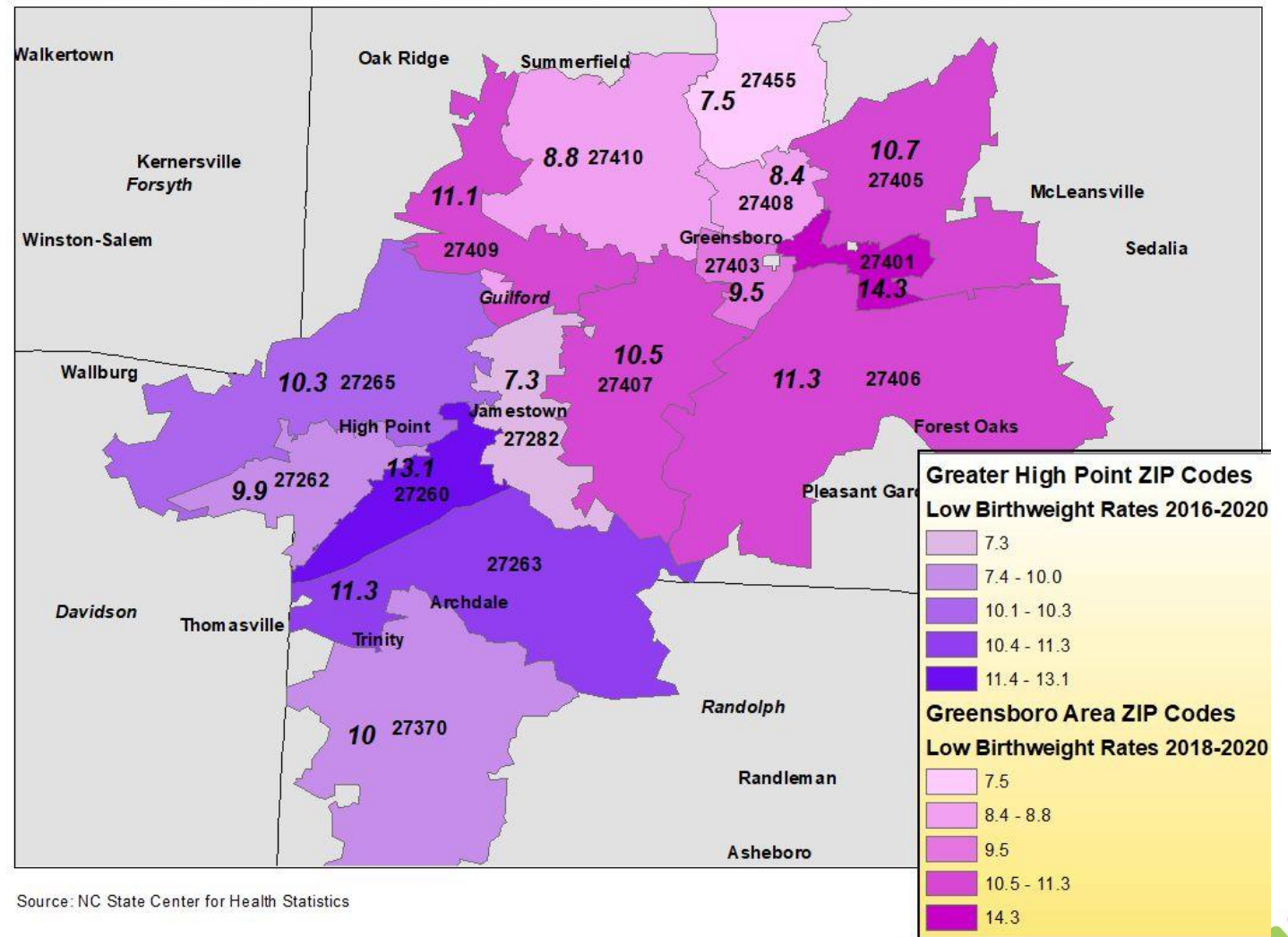


Source: NC State Center for Health Statistics

Low Birthweight Births

- Among Greater High Point ZIP Codes, ZIP Code 27260 had the highest five-year rate of low birthweight births at 13.1 percent.
- The highest rate among Greensboro area ZIP codes was in ZIP Code 27401 (14.3, 3-year rate)
- This compares with the 2016-2020 five-year low birthweight rate for Guilford County overall at 9.9

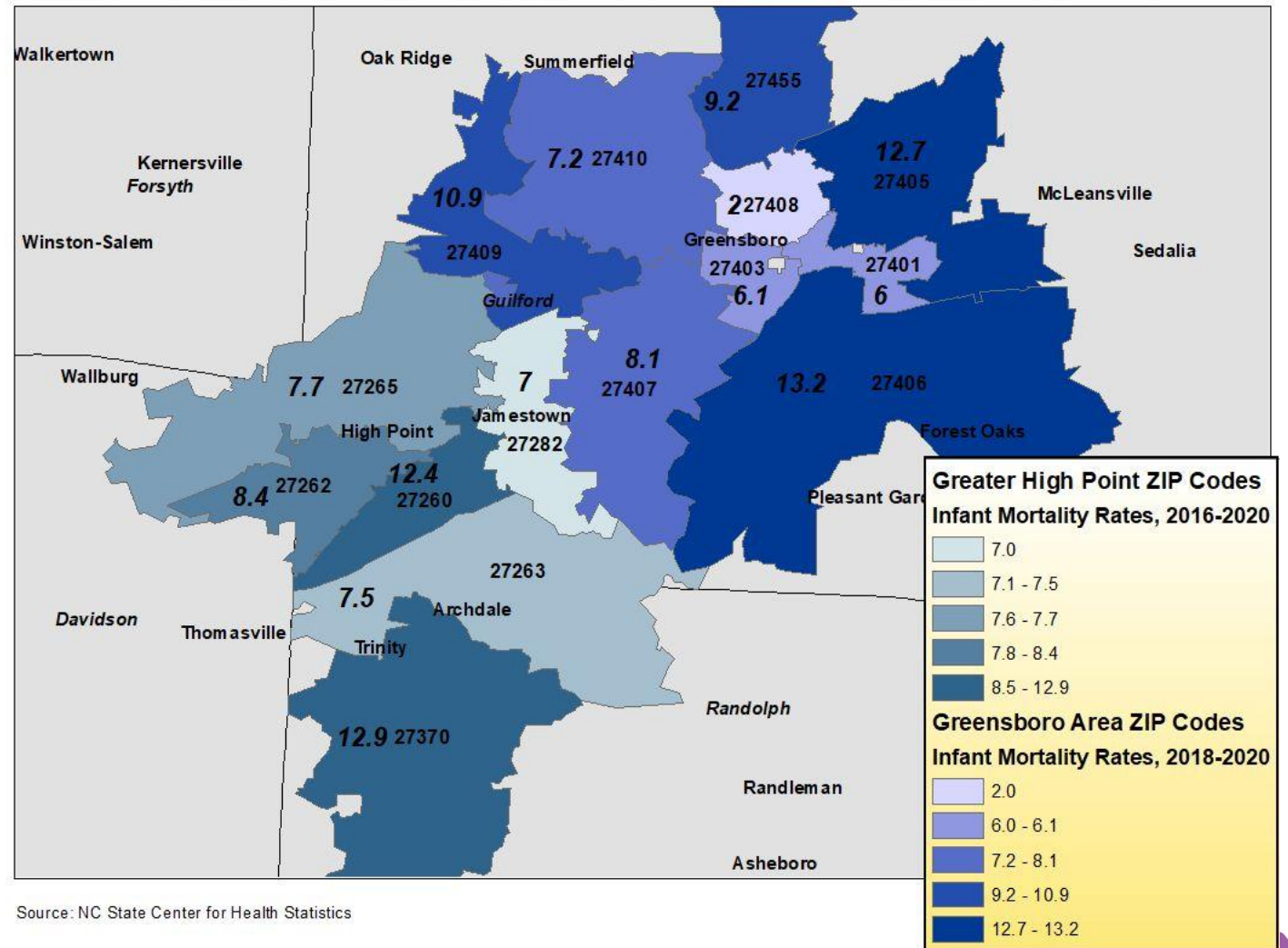
Low Birthweight, Greater High Point and Greensboro Area ZIP Codes



Infant Mortality

- Among Greater High Point ZIP Codes, ZIP Codes 27370 (12.9) and 27260 (12.4) had the highest five-year infant mortality rates.
- The highest infant mortality rates among Greensboro area ZIP codes were in ZIP Codes 27406 (13.2) and 27405 (12.7, 3-year rates)
- This compares with the 2016-2020 five-year infant mortality rate for Guilford County overall at 8.7

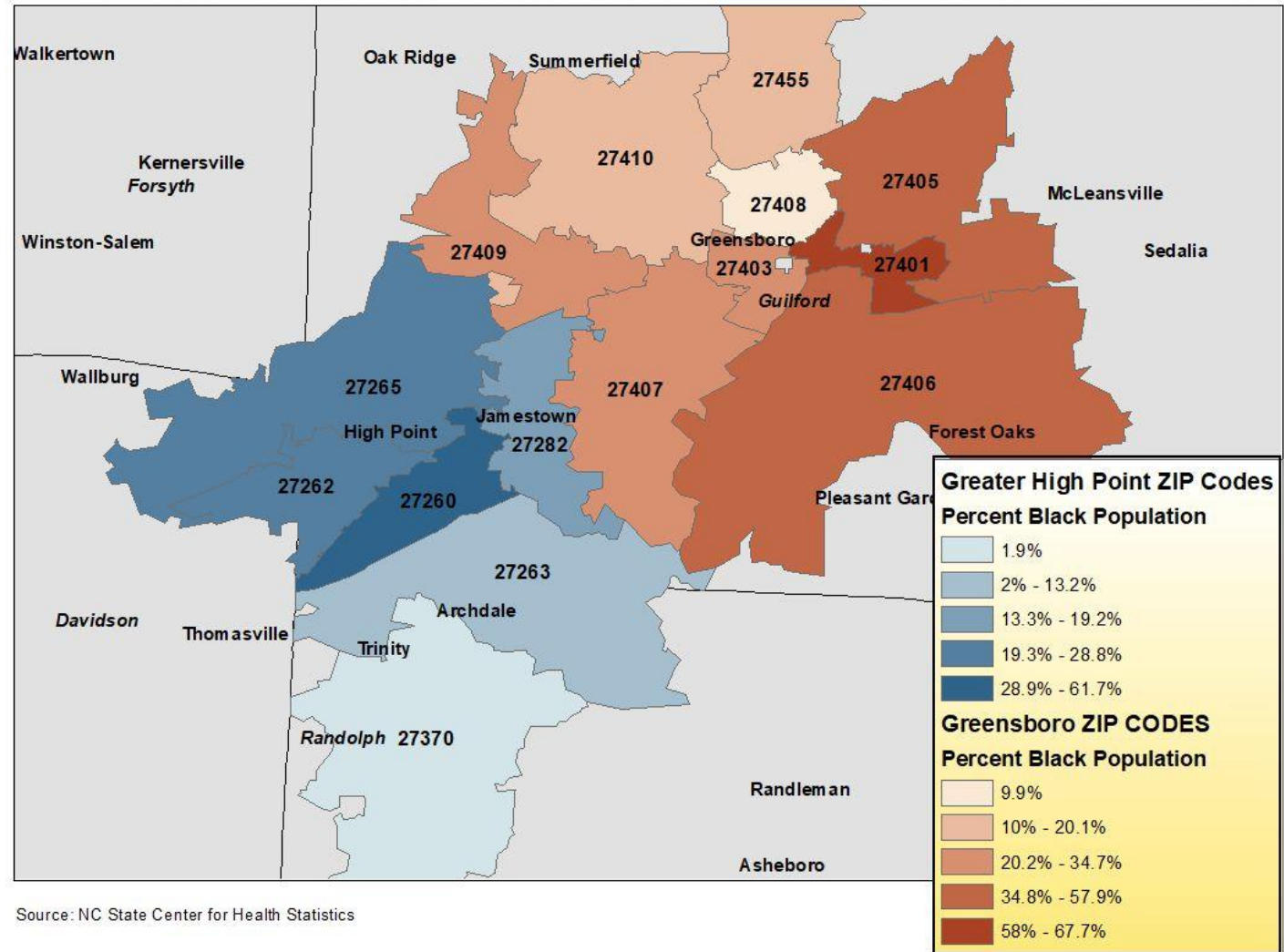
Infant Mortality Rates, Greater High Point and Greensboro Area ZIP Codes



Percent Black Population

- Among Greater High Point ZIP Codes, ZIP Code 27260 has the highest percentage of Black/African-American residents at 61.7%
- The highest percentage of Black/African-American residents among Greensboro area ZIP codes is in ZIP Codes 27401 at 67.7%
- Black/African-American residents make up about 35% of the population of Guilford County.
- Previous slides show generally poorer birth outcomes for residents of ZIP Codes with higher percentages of Black residents.

Percent Black Population, Greater High Point and Greensboro Area ZIP Codes

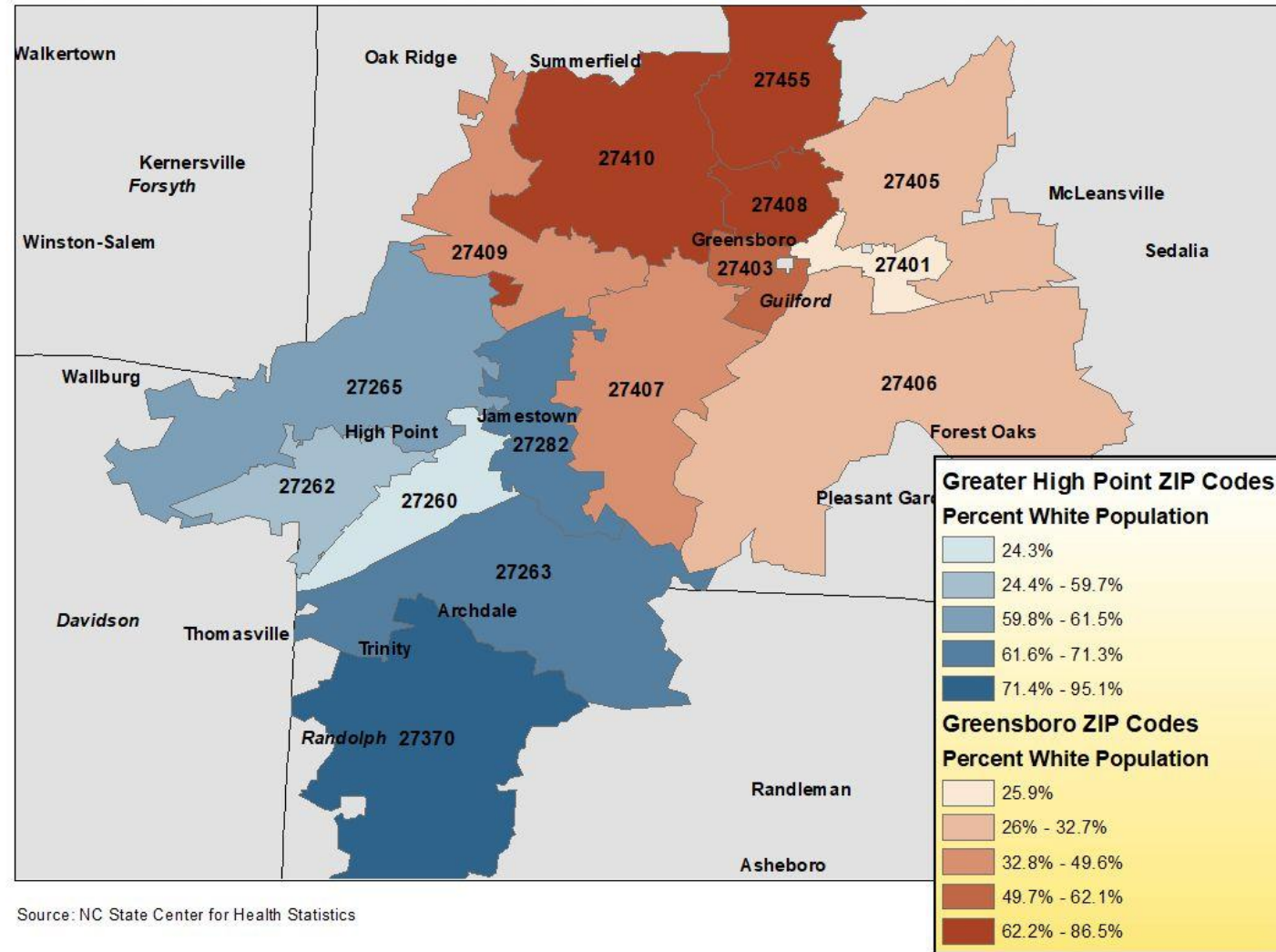


Source: NC State Center for Health Statistics

Percent White Population

- Among Greater High Point ZIP Codes, ZIP Codes 27282, 27263 and 27370 have the highest percentage of White residents (over 61% White).
- Among Greensboro area ZIP Codes, 27408, 27410 and 27455 have the highest percentage of White residents (over 62% White).
- White residents make up about 56% of the population of Guilford County.
- Previous slides show generally better birth outcomes in ZIP Codes with higher percentages of White residents.

Percent White Population, Greater High Point and Greensboro Area ZIP Codes



Source: NC State Center for Health Statistics