



**Every baby and family** should have equitable opportunities and access to achieve the healthiest start in life. In Guilford County, too many babies don't have that chance. In 2021...

<p><b>5,974 babies</b> were born in Guilford County</p>	<p><b>44 of these babies</b> didn't celebrate a first birthday</p>	<p><b>28 (64%) of these babies</b> were Black from all socioeconomic levels</p>
---	--	---

Every Baby Guilford's mission is to ignite and mobilize Guilford County through partnerships and unified strategies to eliminate racial disparities and prevent infant deaths.

We are a collective action movement building collaborative solutions that centers and works together with the community to disrupt longstanding racial disparities in infant mortality in Guilford County.



### **Our Bold Goal**

Every Baby Guilford and our partners will reduce racial disparities in infant death by **50% by 2026 and eliminate them by 2031.**

### **Our Strategies**

<p><b>Advance health equity</b></p>	<p><b>Center community engagement</b></p>	<p><b>Strengthen reproductive care and life planning</b></p>	<p><b>Promote infant wellness and positive child development</b></p>
-------------------------------------	---	--	--

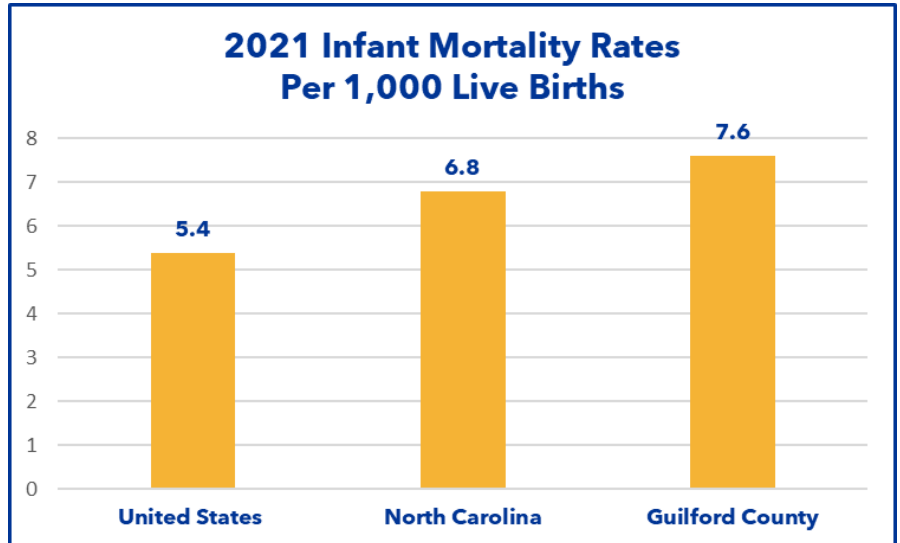
# A New Year. An Inspiring Vision. A Strong Strategy.

## Crucial Conversations: The State of Infant Mortality in Guilford County

On March 27, 2023 community leaders and members gathered for an update on the newly released 2021 infant mortality data. Infant mortality is the death of an infant before his or her first birthday. The infant mortality rate is the number of infant deaths for every 1,000 live births. Maternal and infant health outcomes are key indicators for gauging the overall health and wellbeing of a community.

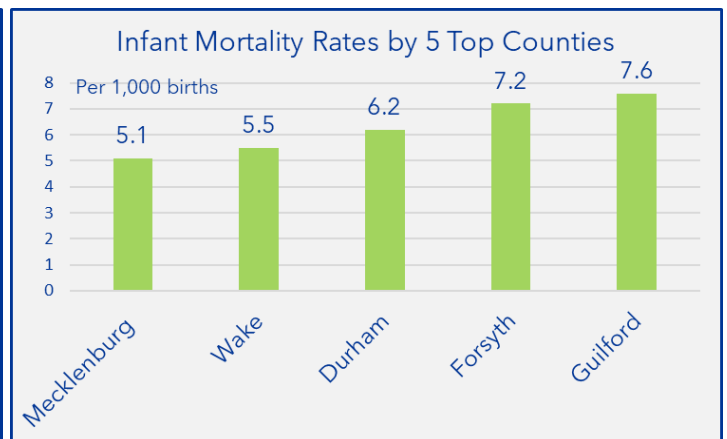
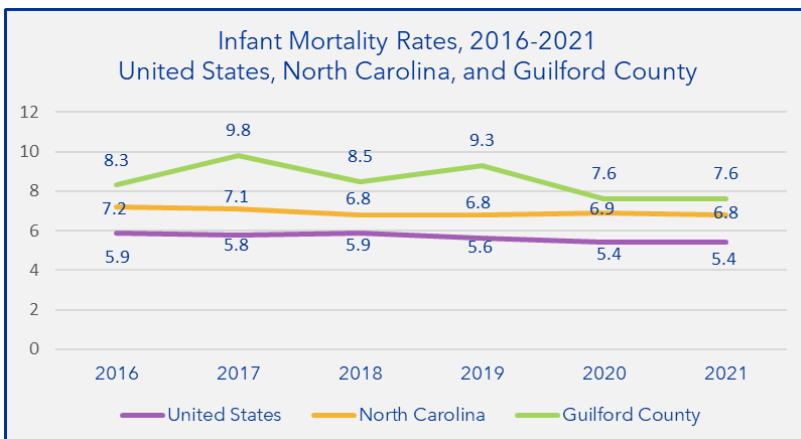
For many years Guilford County's rate of infant deaths has been consistently higher than both the State of NC and the country as a whole. While having no change in Guilford County's infant mortality rate from 2020 to 2021 is welcome, we will need to see several years of declining rates before we can celebrate durable improvement in the prospects of Guilford County babies to survive and thrive.

Guilford County's infant mortality rate still remains one of the highest in North Carolina.



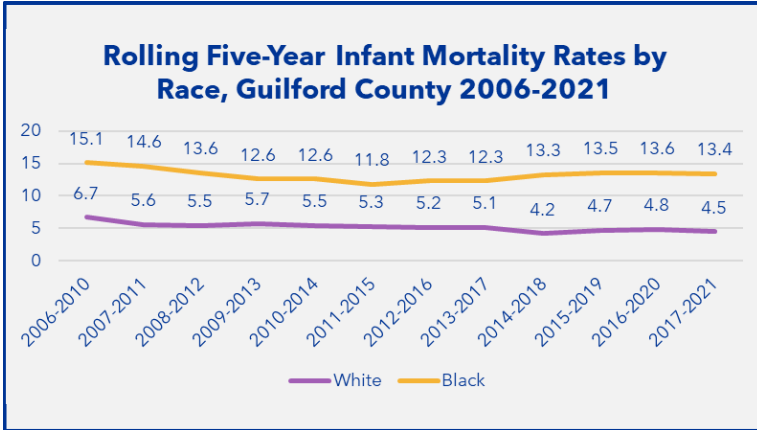
Source: Data provided by the NC Center for Health Statistics, National Center for Health Statistics.

## Infant Mortality Rates, US, NC, Guilford County and Comparison Counties



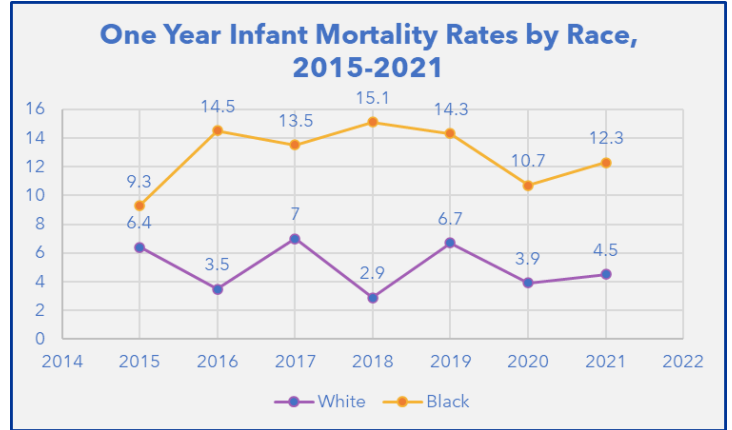


## Five Year Comparisons By Race



This chart shows rolling 5-year rates comparing White and Black rates. As you can see, while the disparity gap is still not closing, the Black five year rate experienced a small decline of 1.5%.

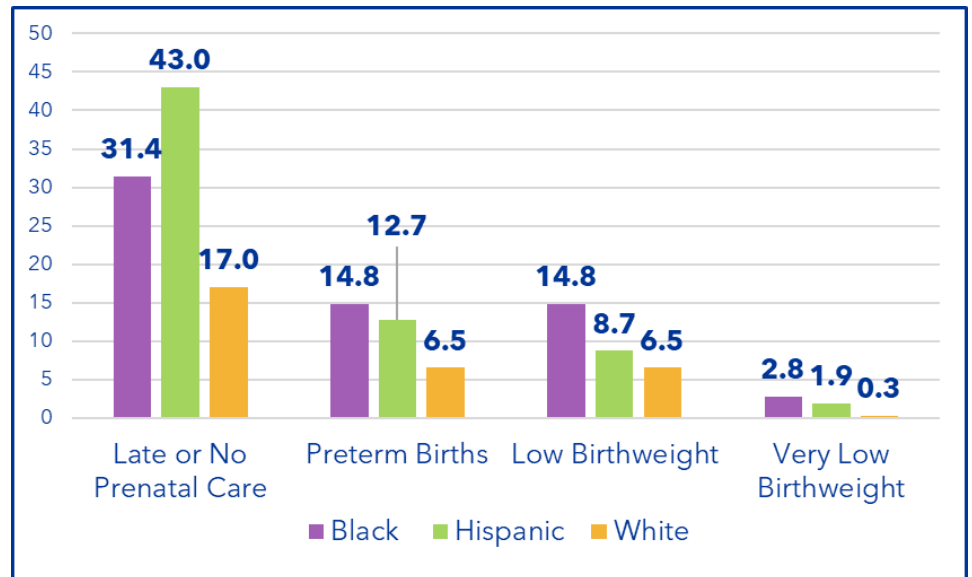
Source: Data provided by the NC Center for Health Statistics, National Center for Health Statistics.



This chart shows five years of one-year rates by race which shows a lot of fluctuation from year to year. Guilford County celebrated a 25% decline in infant deaths between 2019 to 2020 but unfortunately a 15% increase in 2021. White infants also had a 15% increase in infant deaths between 2020 to 2021. It is more reliable to focus on five year trends rather than year to year fluctuations.

## Factors that Lead to Infant Mortality in Guilford County

Every Baby Guilford is using three measurements for defining our success towards reaching our bold goal - late or no prenatal care, preterm birth, and low or very low birthweight rates.



\*Per 1,000 live births

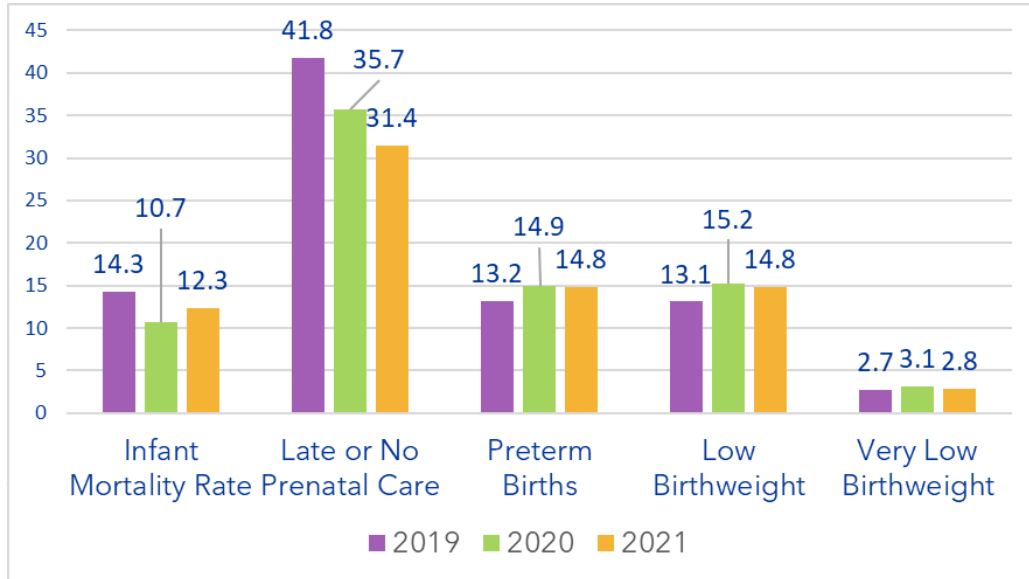
"Low" =<2500 gms/5.5 lbs

"Very Low" = <1500 gms/3.3 lbs

Source: Data provided by the NC Center for Health Statistics, National Center for Health Statistics.

When looking at health outcomes across all races/ethnicities it becomes clear that Black women and their babies are doing disproportionately worse than White women and their babies in all four infant health indicators. In addition, Hispanic women continue to have the highest amount of late or no prenatal care.

## Health Outcomes Impacting Infant Mortality by Race and Ethnicity in Guilford County (2021)



"Low" =<2500 gms/5.5 lbs  
"Very Low" = <1500 gms/3.3 lbs

Source: Data provided by the NC Center for Health Statistics, National Center for Health Statistics.

This chart compares Black infant mortality rates by health outcomes since 2019 (when Every Baby Guilford started measuring data for the collective action strategic plan). Preterm births and low birthweight rates have not had improvements in those three years. But Black women have had much improvement for entering early prenatal care, with a 24% decrease in reported late or no prenatal care.

## Racial Disparities in Infant Mortality

Black babies also make up the largest proportion of infant deaths in the county. In 2021, Black babies made up **38% of births in the county but 64% of infant deaths.**

