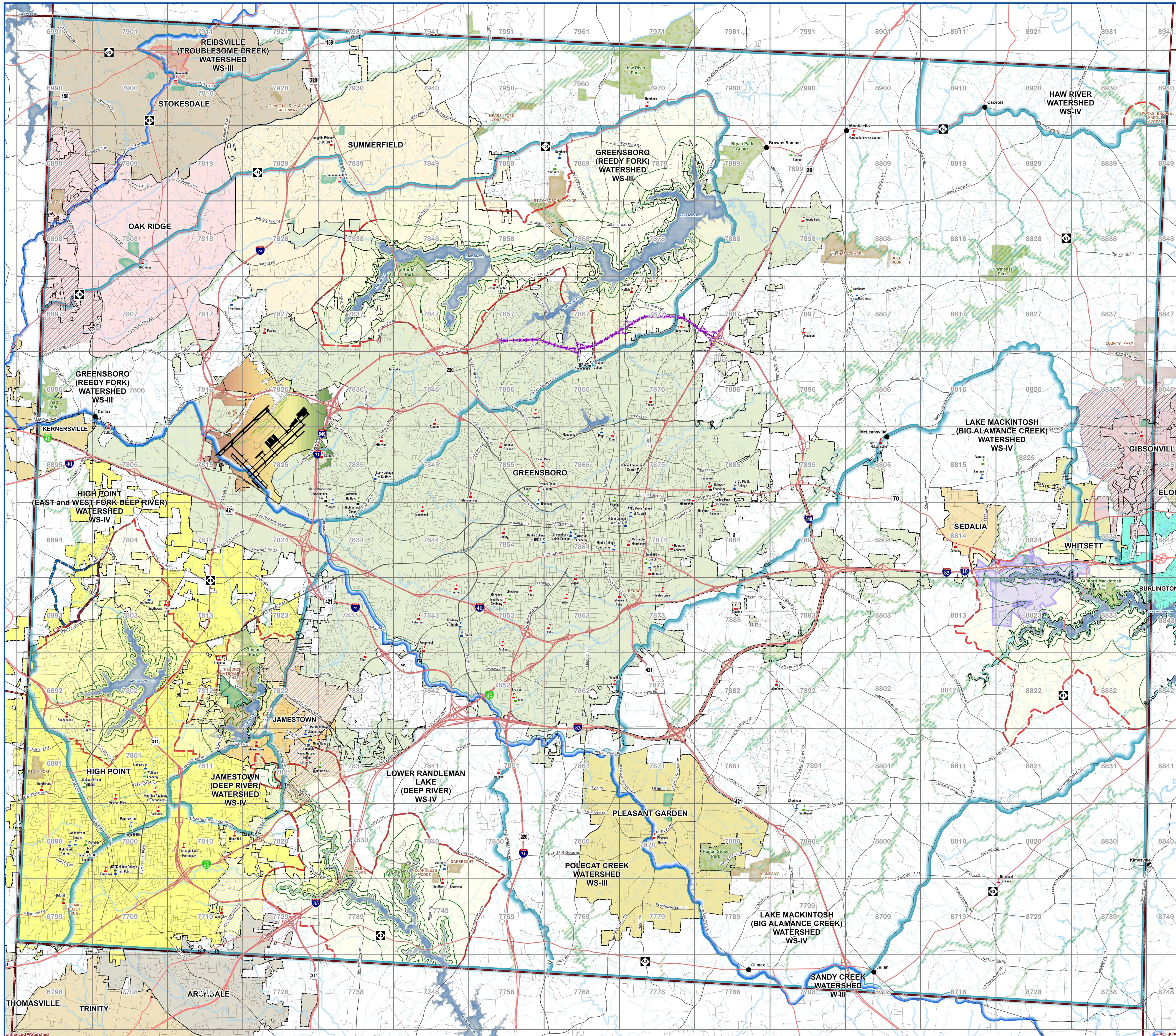


# ENHANCED

## STORMWATER MANAGEMENT/ DESIGNATED WATER SUPPLY WATERSHED MAP



Guilford County  
Planning & Development  
Department



Watershed	LOW DENSITY DEVELOPMENT		HIGH DENSITY DEVELOPMENT	
	Perennial Streams, Lakes & Ponds	Intermittent Streams	Perennial Streams, Lakes & Ponds	Intermittent Streams
Water Supply Districts WS-III	30 ft	30 ft	150 ft	30 ft
Polkcat Creek				
Reidsville (Troublesome Creek)				
Jamestown (Deep River)	5 ft	5 ft	5 ft	5 ft
High Point (East & West Fork Deep River)				
Lower Randleman Lake (Deep River)				

District	NPDES Performance Standards	
	LOW DENSITY OPTION	HIGH DENSITY OPTION
NPDES, non-water supply areas	2 DU/AC; 0-24% BUA	greater than 2 DU/AC; greater than 24% BUA

Watershed	GWA Performance Standards	
	LOW DENSITY OPTION	HIGH DENSITY OPTION
WS-III	2 DU/AC	greater than 2 DU/AC
Reidsville (Troublesome Creek)	0-24% BUA	24.01%-50% BUA/suprup
Greensboro (Reedy Fork)		
Polkcat Creek		
Sandy Creek		
WS-IV	2 DU/AC	greater than 2 DU/AC
High Point (East and West Fork Deep River)	0-24% BUA	24.01%-70% BUA
Lake Mackintosh (Big Alamance Creek)		
Jamestown (Deep River)		
Lower Randleman Lake (Deep River)	1 DU/AC	greater than 1 DU/AC
Lower Randleman Lake (Deep River)	0-12% BUA	12.01%-50% BUA

Watershed	WCA Density and Built-Up Area Coverage Limits (expressed as dwelling units/gross acre or % maximum)			
	Tier 1	Tier 2	LOW DENSITY OPTION	Tier 4
Greensboro (Reedy Fork)	N/A	1 DU/5 AC; 0-2.5%	1 DU/3 AC; 0-4.0%	1 DU/1 AC; 0-12.0%
High Point (East and West Fork Deep River)	N/A	1 DU/5 AC; 0-2.5%	1 DU/3 AC; 0-4.0%	1 DU/1 AC; 0-12.0%
Lake Mackintosh (Big Alamance Creek)	N/A	1 DU/5 AC; 0-2.5%	1 DU/3 AC; 0-4.0%	1 DU/1 AC; 0-12.0%
Jamestown (Deep River)	N/A	1 DU/5 AC; 0-2.5%	1 DU/3 AC; 0-4.0%	1 DU/1 AC; 0-12.0%
Lower Randleman Lake (Deep River)	N/A	1 DU/5 AC; 0-2.5%	1 DU/3 AC; 0-4.0%	1 DU/1 AC; 0-12.0%

Watershed	NPDES Performance Standards	
	LOW DENSITY OPTION	HIGH DENSITY OPTION
Haw River (Haw River)	2 DU/AC; 0-24.0%	2 DU/AC; 24.01-50.0%
Haw River Watershed has no Tier Divisions		

Watershed	WCA Land Disturbance Limits			
	Tier 1	Tier 2	Tier 3	Tier 4
Maximum Land Disturbance	NA	10% of usable property	50% of usable property	75% of usable property

**Legend**

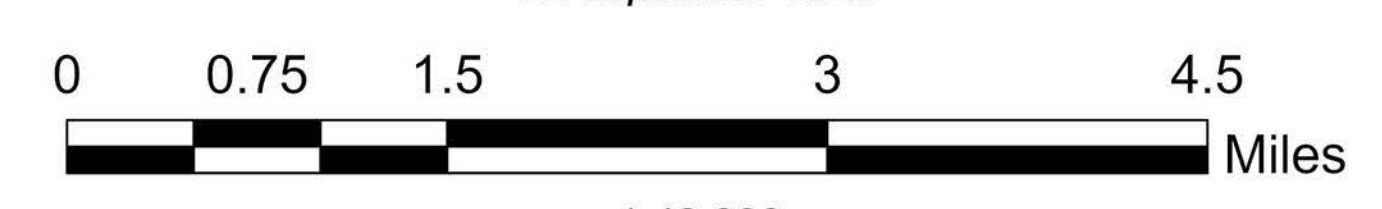
- Schools:**
  - Alternative
  - Elementary
  - High
  - Middle
  - Towns
- Watershed Boundaries**
- WCA Boundaries**
- Tier Lines**
- High Point WCA**
- Flood Plains**
- OPEN SPACE**
- PARK**
- PRESERVE**
- TOWN PARK**
- Rock Creek Consent Area**
- Major Streams**
- Streams**
- Lakes**
- PTI Land**
- TownCore**
- Jordan Lake Watershed Boundary**

Lake Brandt - 751.1'      High Point Lake - 756.0'  
 Lake Higgins - 763.9'      Oak Hollow Lake - 803.0'  
 Lake Mackintosh - 557.1'      Randleman Lake - 682.0'  
 Lake Townsend - 751.5'

**DATA SOURCE:**  
 Guilford County GIS  
 Guilford County Planning & Development - Watershed Protection/  
 Stormwater Management



11 September 2020



1:48,000

