



DESIGNWORKSHOP

Landscape Architecture
Planning
Urban Design
Strategic Services
Environmental Graphic Design

621 Hillsborough St., Suite 202
Raleigh, North Carolina 27603
919-973-6254
designworkshop.com

MEETING AGENDA

To: Guilford County Comprehensive Plan Steering Committee

From: Brenna Laffey, Design Workshop

Date: July 13, 2023

Project Name: Guilford County Comprehensive Plan

Subject: Steering Committee Meeting #2 Agenda

Meeting Date: Thursday, July 20, 2023

Start/End: 2pm – 3:30pm ET

Location: **Zoom Option:**
<https://designworkshop.zoom.us/j/85208774644>

In-person Option: Old Guilford County Courthouse at 300 W. Washington Street, Greensboro, NC 27401 (Building entry from Plaza side – see map attachment)

Copy To: Guilford County: Leslie Bell, Kaye Graybeal, Justin Snyder, Jessie Baptist; Design Workshop: Jessica Garrow, Emily McCoy, Reilly Thimons, Corey Dodd; Lee Institute: Chrystal Joy

-
1. **Agenda Overview and Introductions – 10 min**
 - a. Opening remarks by Chairman Mac Sims
 - b. Introduction and role of sub-consultant Chrystal Joy of Lee Institute to assist with public engagement.
 - c. Overview of meeting agenda, goals, and expected outcomes
 2. **Review of Plan Scope/Areas of Most Influence – 10 min**
 - a. Review map of unincorporated areas (see attached)
 - b. Collaboration and consultation with other jurisdictions
 3. **Review of Past Steering Committee Meeting and Project Goals – 10 min**
 - a. Summary of what we heard at the Steering Committee Strategic Kick Off Meeting (SKO)
 4. **Summary of Community and Stakeholder Input – 10 min**
 - a. Summary of first public workshop and survey outreach efforts
 - b. Summary of Community Pulse survey to date
 - c. Preliminary priorities and high-level goals emerging from community feedback to date
 5. **Upcoming Community Workshop Series – 30 min**
 - a. Overview of approach for holding workshops in Area Plan locations
 - b. Preliminary workshop series meeting areas / discussion on potential locations (Steering Committee input)
 - Southwest Area Plan / Southern Area Plan
 - Alamance Creek Area Plan / Woody Mill / Liberty Rd. Small Area Plan
 - Southeast Area Plan / Rock Creek Area Plan
 - Northeast Area Plan
 - Northern Lakes Area Plan / Northwest Area Plan
 - c. Anticipated topics and activities discussion on strategy for eliciting public feedback (Steering Committee Input)
 6. **Next Steps and Closing Thoughts – 20 min**
 - a. Steering Committee Meeting locations discussion (Steering Committee Input)
 - b. Timeframe for next meeting date
 - c. Follow up homework/activities
 - d. Closing remarks from Chairman Mac Sims

GUILFORD COUNTY STEERING COMMITTEE MEETING/PARKING LOCATIONS

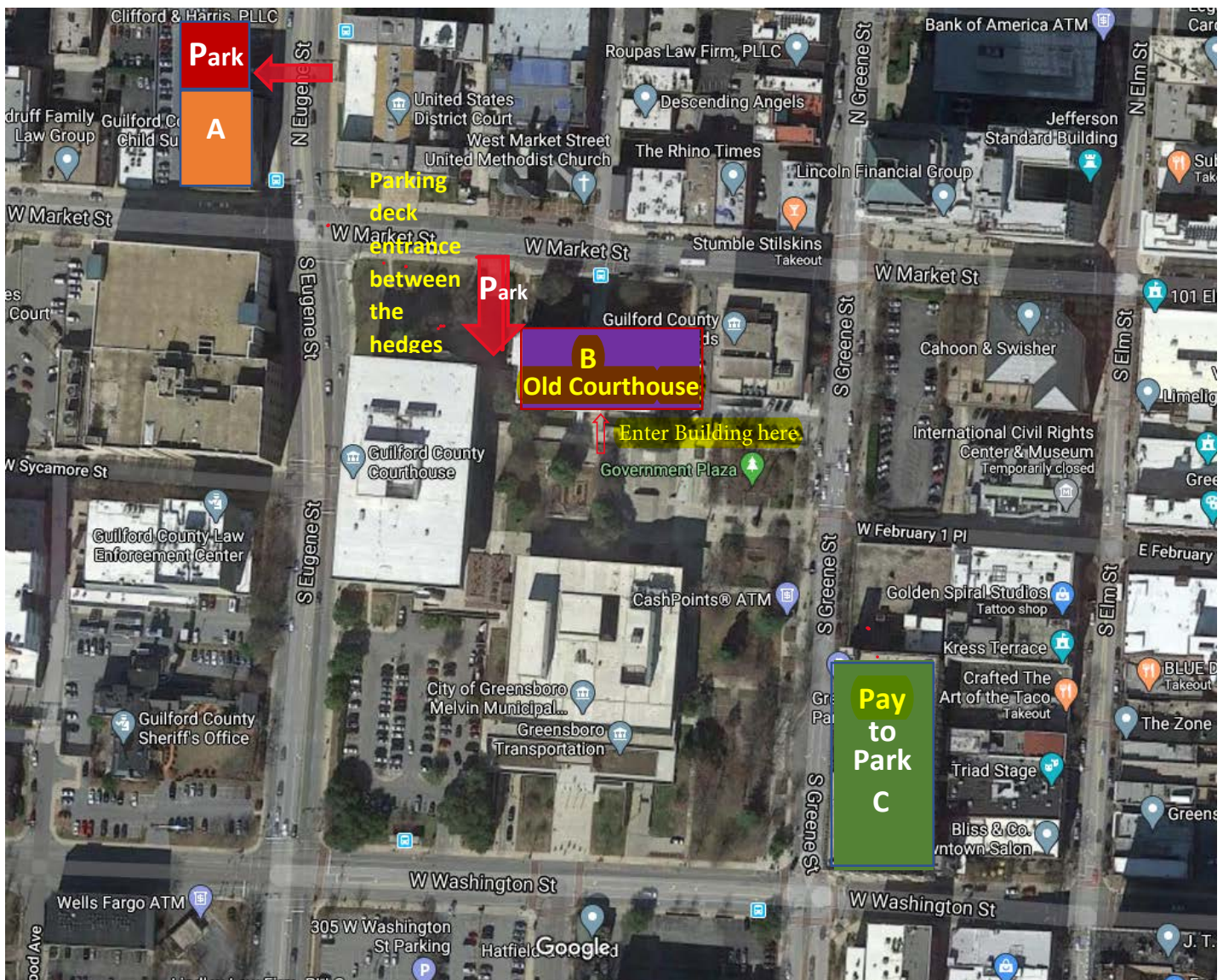
A - Guilford County Independence Center (400 West Market St)

B - Guilford County Old Courthouse (301 West Market St) (Meeting in 1st- floor Coleman Rm.)

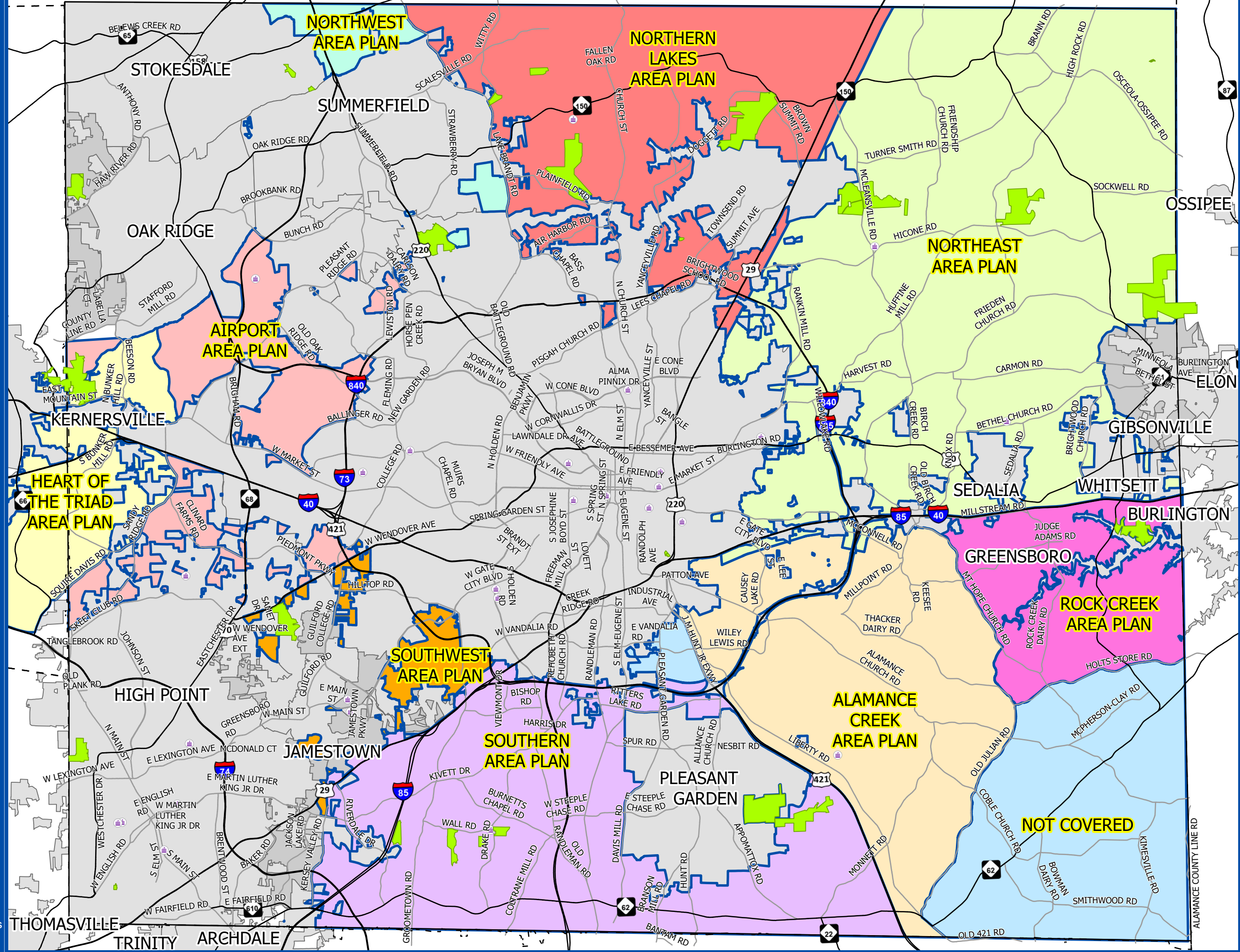
C - Pay-to-Park (211 S. Greene Street) (Bring ticket with you to get reimbursed)

P - Free Parking

(2-hour meter parking on S. Greene Street)



GUILFORD COUNTY AREA PLANS 2023



Legend

- Parks
- High Schools
- Primary Roads
- Secondary Roads
- City Limits
- ETJ Area

Area Plans

- AIRPORT AREA PLAN
- ALAMANCE CREEK AREA PLAN
- HEART OF THE TRIAD AREA PLAN
- NORTHEAST AREA PLAN
- NORTHERN LAKES AREA PLAN
- NORTHWEST AREA PLAN
- NOT COVERED
- ROCK CREEK AREA PLAN
- SOUTHERN AREA PLAN
- SOUTHWEST AREA PLAN

