

| 2018 | Injuries Data Brief



Key Findings

- In 2016, the overall leading cause of injury deaths was unintentional poisoning, followed by unintentional falls, suicide, motor vehicle injury deaths and homicide.
- Unintentional poisoning deaths (95 in 2016) were due primarily to adverse reactions to prescription and non-prescription use of opioid drugs.
- Between 2002 and 2010, deaths due to motor vehicle crashes generally declined, but have shown an increasing trend since 2011.
- In 2016, individuals between the ages of 15-54 and 65-74 were at greatest risk for motor vehicle injury deaths.
- Mortality rates due to non-motor vehicle-related injuries have doubled in Guilford County and NC over the last 20 years.
- Non-motor vehicle injury mortality heavily impacts those over the age of 85, largely due to falls.
- Homicide deaths declined in Guilford County from 13 per 100,000 in 1997 to 8.2 per 100,000 in 2016. Those most at risk of homicide are young adults ages 25-34.
- Suicide deaths, which increased sharply from 43 deaths in 2014 to 71 deaths in 2015, declined to 60 in 2016.
- Suicide affects a wide range of age groups, from teenagers to the elderly, but with middle-aged adults at greatest risk.
- Firearms were used in the majority of both suicides and homicides.
- Measures of prescription and non-prescription opioid overdose showed increases in 2017.

Inside this Data Brief

Leading Causes of Injury Mortality	2
Leading Causes of Injury Mortality by Sex	2
Leading Causes of Injury Mortality by Race and Ethnicity	3
Detailed Causes of Non-Motor Vehicle Injury Mortality, 2016	4
Opioid Drug Trends	5
Injury Mortality by Age Group	6
Injury Mortality Trends	7
Suicide Mortality Trends	8
Homicide Suicide Mortality Trends	8

Leading Causes of Injury Mortality and Rates per 100,000 Guilford County, 2012-2016

All Residents

Injury Type	2012		2013		2014		2015		2016	
	Number	Rate	Number	Rate	Number	Rate	Number	Rate	Number	Rate
Motor Vehicle Injury	43	8.6	47	9.2	53	10.3	53	10.2	57	10.9
Unintentional Falls	70	14.0	83	16.4	74	14.4	77	14.9	83	15.9
Suicide, Self-Inflicted Injury	59	11.8	52	10.3	43	8.4	71	13.7	60	11.5
Homicide	32	6.4	33	6.5	28	5.5	39	7.5	44	8.4
Unintentional Poisoning	50	10.0	37	7.3	51	10.0	62	12.0	95	18.2
Unintentional Death by Fire	3	0.6	5	1.0	4	0.8	1	0.2	5	1.0
Population	501,058		506,610		512,119		517,600		521,330	

Source: North Carolina Department of Health and Human Services, Division of Public Health. State Center for Health Statistics.

Leading Causes of Injury Mortality and Rates per 100,000 by Sex Guilford County, 2012-2016

Female Residents

Injury Type	2012		2013		2014		2015		2016	
	Number	Rate	Number	Rate	Number	Rate	Number	Rate	Number	Rate
Motor Vehicle Injury	8	3.0	9	3.4	8	3.0	14	5.2	19	6.9
Unintentional Falls	30	11.4	46	17.2	44	16.4	47	17.3	50	18.2
Suicide, Self-Inflicted Injury	18	6.8	18	6.7	11	4.1	15	5.5	18	5.6
Homicide	9	3.4	8	3.0	8	3.0	7	2.6	6	2.2
Unintentional Poisoning	11	4.2	9	3.4	17	6.3	17	6.3	29	10.6
Unintentional Death by Fire	2	0.4	1	0.4	1	0.4	1	0.4	3	1.1
Population	263,608		267,293		268,635		271,543		274,081	

Male Residents

Injury Type	2012		2013		2014		2015		2016	
	Number	Rate	Number	Rate	Number	Rate	Number	Rate	Number	Rate
Motor Vehicle Injury	35	14.7	38	15.8	45	18.5	39	15.8	38	15.4
Unintentional Falls	40	16.8	37	15.4	30	12.3	30	12.2	33	13.3
Suicide, Self-Inflicted Injury	41	17.3	34	14.2	32	13.2	56	22.7	42	17.0
Homicide	23	9.7	25	10.4	20	8.2	32	13.2	38	15.4
Unintentional Poisoning	39	16.4	28	11.7	34	14.0	45	18.3	66	26.7
Unintentional Death by Fire	1	0.4	4	1.7	3	1.2	0	0.0	2	0.8
Population	237,430		240,126		243,119		246,057		247,249	

Source: North Carolina Department of Health and Human Services, Division of Public Health. State Center for Health Statistics.

Leading Causes of Injury Mortality and Rates per 100,000, by Race Guilford County, 2012-2016

White Residents

Injury Type	2012		2013		2014		2015		2016	
	Number	Rate	Number	Rate	Number	Rate	Number	Rate	Number	Rate
Motor Vehicle Injury	31	10.4	26	8.7	29	9.5	32	10.5	33	10.9
Unintentional Falls	61	20.5	70	23.4	63	20.7	66	21.7	74	24.3
Suicide, Self-Inflicted Injury	52	17.5	38	12.7	34	11.2	62	20.4	53	17.4
Homicide	9	3.0	12	4.0	5	1.6	6	2.0	6	2.0
Unintentional Poisoning	39	13.1	26	8.7	40	13.2	46	15.1	72	23.7
Unintentional Death by Fire	2	0.7	5	1.7	2	0.7	1	0.3	4	1.3
Population	296,910		298,914		303,718		304,661		303,976	

Black/African-American Residents

Injury Type	2012		2013		2014		2015		2016	
	Number	Rate	Number	Rate	Number	Rate	Number	Rate	Number	Rate
Motor Vehicle Injury	11	6.6	20	11.7	17	9.5	18	9.9	19	10.2
Unintentional Falls	9	5.4	12	7.0	10	5.6	9	4.9	9	4.8
Suicide, Self-Inflicted Injury	4	2.4	13	7.6	8	4.5	5	2.7	4	2.1
Homicide	23	13.7	19	11.2	21	11.7	29	15.9	34	18.3
Unintentional Poisoning	11	6.6	10	5.9	9	5.0	11	6.0	21	11.4
Unintentional Death by Fire	1	0.6	0	0.0	1	0.6	0	0.0	1	0.5
Population	167,488		170,260		179,332		182,548		185,846	

Asian, Native American and Hispanic, 2016

Injury Type	Asian	Native American	Hispanic
	Number	Number	Number
Motor Vehicle Injury	4	1	2
Unintentional Falls	0	0	0
Suicide, Self-Inflicted Injury	3	0	1
Homicide and Intentional Injury	2	1	2
Unintentional Poisoning	0	1	1
Unintentional Death by Fire	0	0	0

Source: North Carolina Department of Health and Human Services, Division of Public Health. State Center for Health Statistics.

Detailed Causes of Non-Motor Vehicle Injury Mortality, 2016

ICD-10 Cause of Death Codes	Cause of Death Description	Number of Deaths
Deaths due to Unintentional Poisoning		
X40-X49	<i>Accidental poisoning by and exposure to noxious substances</i>	95
X42	Accidental poisoning by and exposure to narcotics and psychodysleptics [hallucinogens], Not Elsewhere Classified (NEC)	58
X44	Accidental poisoning by and exposure to other and unspecified drugs, medicaments & biological substances	32
X45	Accidental poisoning by and exposure to alcohol	3
X47	Accidental poisoning by and exposure to other gases and vapors	2
Deaths due to Suicide		
X60-X84	<i>Intentional self-harm</i>	60
X61	Intentional self-poisoning by & exposure to antiepileptic, sedative-hypnotic, antiparkinsonism and psychotropic drugs	1
X62	Intentional self-poisoning by and exposure to narcotics and psychodysleptics [hallucinogens], not elsewhere classified	1
X64	Intentional self-poisoning by and exposure to other & unspecified drugs, medicaments and biological substances	4
X67	Intentional self-poisoning by and exposure to other gases and vapors	2
X70	Intentional self-harm by hanging, strangulation and suffocation	12
X72	Intentional self-harm by handgun discharge	10
X73	Intentional self-harm by rifle, shotgun and larger	5
X74	Intentional self-harm by other and unspecified firearm and gun discharge	19
X78	Intentional self-harm by sharp object	2
X80	Intentional self-harm by jumping from a high place	1
X81	Intentional self-harm by jumping or lying in front of motor vehicle	2
X82	Intentional self-harm by crashing of motor vehicle	1
Deaths due to Homicide		
X85-Y09	<i>Assault</i>	44
X93	Assault by handgun discharge	3
X95	Assault by other and unspecified firearm discharge	33
X99	Assault by sharp object	3
Y08	Assault by other unspecified means	1
Y09	Assault by unspecified means	3
Y871	Sequelae of assault	1

Source: Detailed Mortality Statistics, North Carolina Residents, 2014, NC State Center for Health Statistics.

Opioid Drug Trends in Guilford County: Quarterly Data

	Jan-Mar 2016	Apr-Jun 2016	Jul-Sep 2016	Oct-Dec 2016	Jan-Mar 2017	Apr-Jun 2017	Jul-Sep 2017	Oct-Dec 2017
Heroin Overdose ED Visits¹	18	28	69	41	48	67	82	94
Opioid Overdose ED Visits¹	51	57	97	58	72	96	107	115
Heroin-Related ED Visits¹	64	111	249	187	235	249	294	233
EMS Overdose Calls²	172	200	245	164	231	296	270	218

¹Source: NC DETECT (NC Disease Event Tracking and Epidemiologic Collection Tool).

²Source: PreMIS (Pre-hospital Medical Information System), from NC DETECT.

Opioid Drug Trends in Guilford County: Annual Data Trends

	2011	2012	2013	2014	2015	2016	2017
Heroin Overdose ED Visits¹	14	36	70	191	107	156	291
Opioid Overdose ED Visits¹	73	119	184	305	243	263	390
Heroin-Related ED Visits¹	156	178	104	234	180	611	1,009
EMS Overdose Calls¹	837	805	329	292	608	781	1,015
Opiate Poisoning Deaths^{2,3}	25	31	17	42	47	73	--
Heroin Poisoning Deaths^{2,4}	7	9	9	24	23	41	--
Synthetic Opioid Poisoning Deaths^{2,5}	1	1	1	18	11	35	--

¹Source: NC DETECT (NC Disease Event Tracking and Epidemiologic Collection Tool), Emergency Department data.

²Source: Injury and Violence Prevention Branch, NCDHHS.

³Cause of Death Codes used: Any mention (cod1-cod21) of T40.0 (Opium), T40.1 (Heroin), T40.2 (Other Opioids), T40.3 (Methadone) and/or T40.4 (Other synthetic opioid).

⁴Cause of Death Codes used: Any mention (cod1-cod21) of T40.1 (Heroin).

⁵Cause of Death Codes used: Any mention (cod1-cod21) of T40.4 (Other Synthetic Opioids).

Characteristics of Cases: Opioid Overdose ED Visits, January 01-December 31, 2017

Characteristic	Number	Percent
Patient City/Location		
Greensboro	178	45.6%
High Point	105	26.9%
Archdale	20	5.1%
Gibsonville	14	3.6%
Pleasant Garden	8	2.1
Other	65	16.7
Patient Sex		
Male	245	62.8%
Female	145	37.2%
Patient Race		
White	332	85.1%
Black	46	11.8%
Other	8	2.1%
Patient Age Group		
Ages 0-9	2	0.5%
Ages 10-19	10	2.5%
Ages 20-29	132	33.8%
Ages 30-39	114	29.2%
Ages 40-49	56	14.4%
Ages 50-59	55	14.1%
Ages 60 and Over	21	5.4%
Total	390	100.0

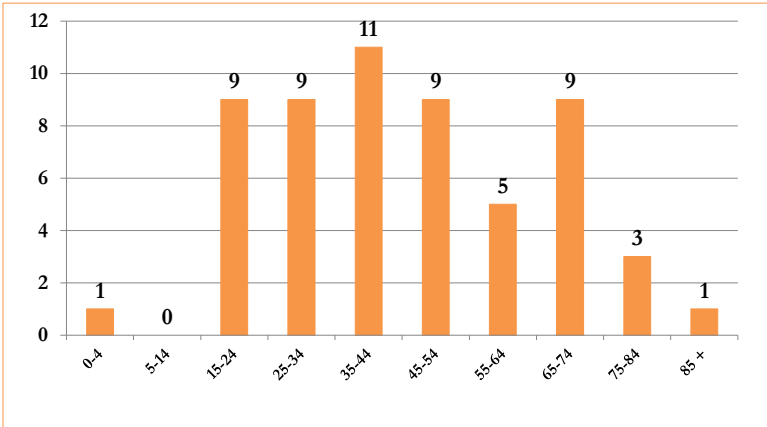
¹Source: NC DETECT (NC Disease Event Tracking and Epidemiologic Collection Tool).

Data prepared by the Guilford County Department of Health and Human Services, Division of Public Health.

Injury Mortality by Age Group

Motor Vehicle Injury Deaths by Age Group Guilford County, 2016

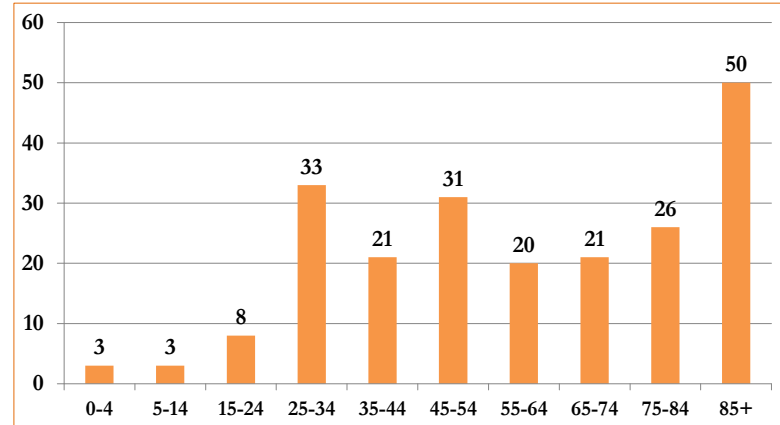
Number of Deaths



Source: Data provided by the NC Center for Health Statistics.
Chart prepared by the GCDHHS, Division of Public Health.

Non-Motor Vehicle Injury Deaths by Age Group Guilford County, 2016

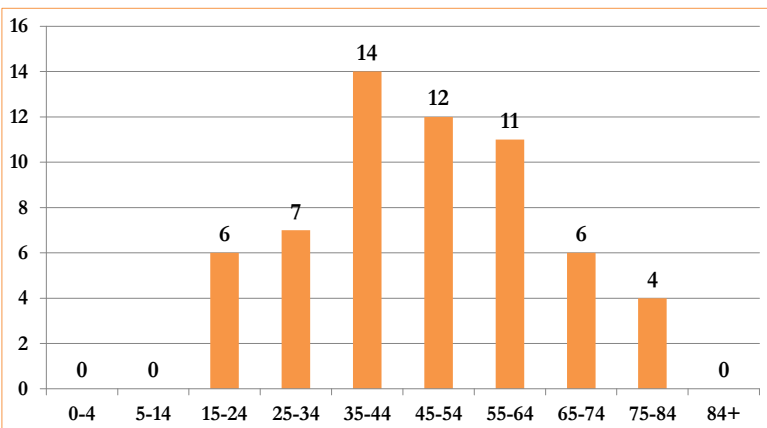
Number of Deaths



Source: Data provided by the NC Center for Health Statistics.
Chart prepared by the GCDHHS, Division of Public Health.

Suicide Deaths by Age Group Guilford County, 2016

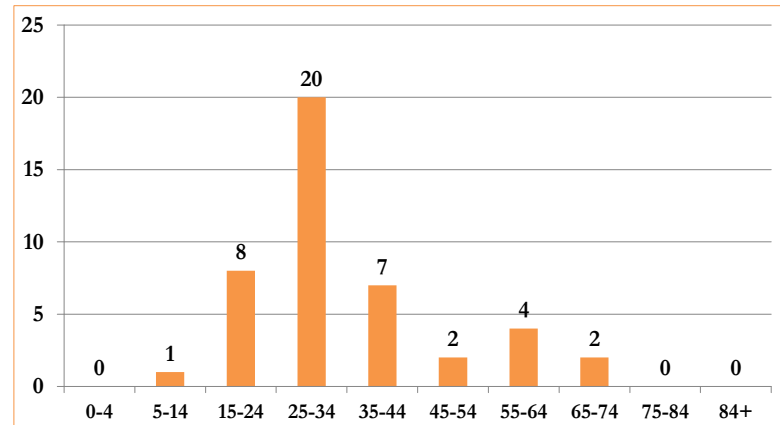
Number of Deaths



Source: Data provided by the NC Center for Health Statistics.
Chart prepared by the GCDHHS, Division of Public Health.

Homicide Deaths by Age Group Guilford County, 2016

Number of Deaths

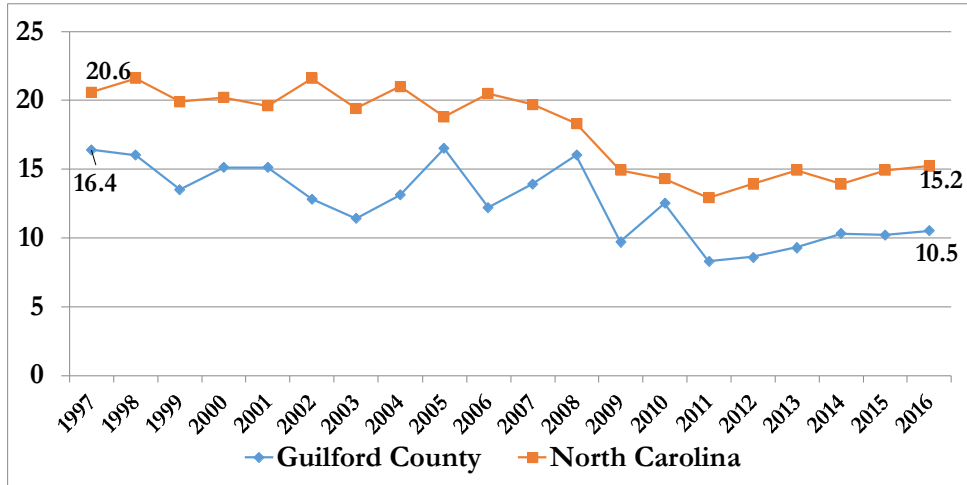


Source: Data provided by the NC Center for Health Statistics.
Chart prepared by the GCDHHS, Division of Public Health.

Injury Mortality Trends

Motor Vehicle Injury Mortality, Guilford County and NC, 1997-2016

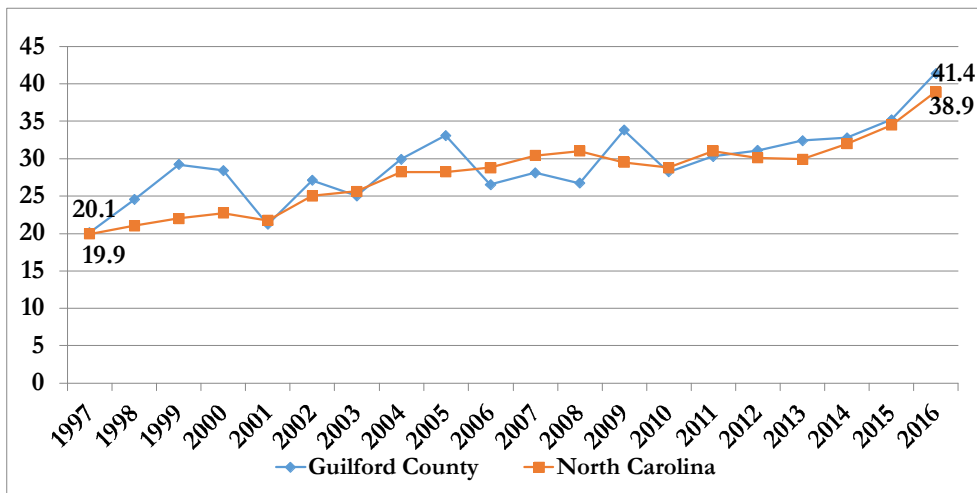
Rate per 100,000



Source: Data provided by the NC Center for Health Statistics.
Chart prepared by the GCDHHS, Division of Public Health.

Mortality Due to Unintentional Injury other than Motor Vehicle Injury, 1997-2016

Rate per 100,000



Source: Data provided by the NC Center for Health Statistics.
Chart prepared by the GCDHHS, Division of Public Health.

