

| 2016 | Maternal and Child Health Data Brief



Highlights

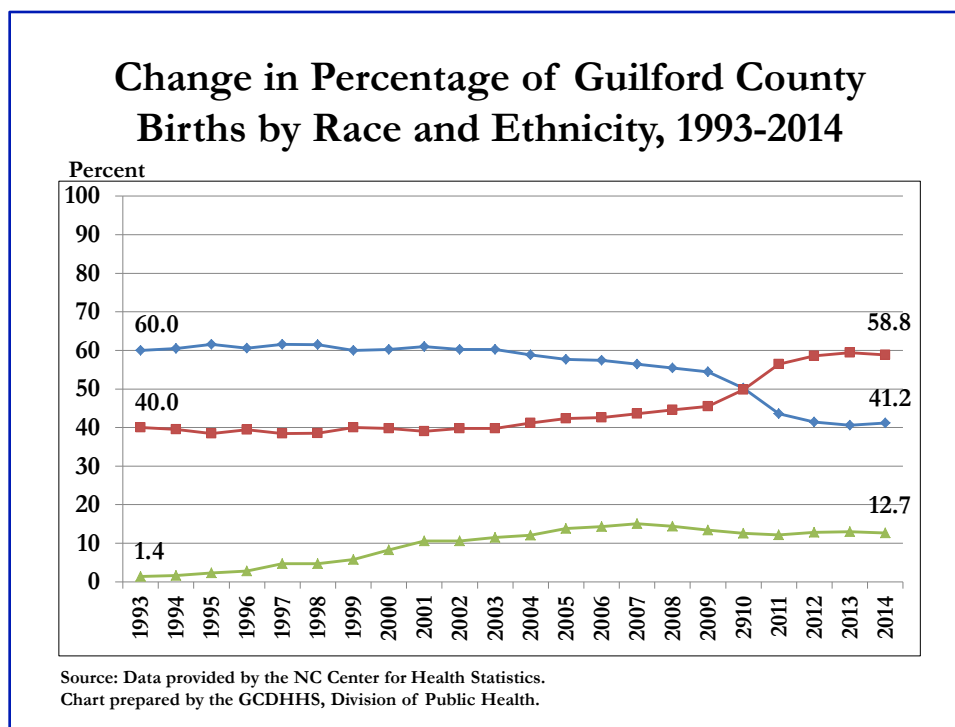
- After a plateau period between 2002 to 2007, teen pregnancy rates have continued to decline in Guilford County among all races, though a racial disparity persists.
- The percentage of women entering late into prenatal care or not receiving care increased across all race and ethnic groups in 2013 and in 2014.
- The rate of preterm births increased to 10.5% in 2014, with a significant and persistent racial disparity.
- Percentages of low and very low birth weight for the years 2010 to 2014 were significantly higher for Black births than for White births.
- After increasing to 8.6 infant deaths per 1,000 live births in 2013, the infant mortality rate declined in 2014 to 7.9. The White rate declined to a historically low rate of 3.8, while the Black/African-American rate increased to 13.6. The Hispanic rate was 5.2 infant deaths per 1,000 live births.
- The Guilford County infant mortality rate is higher than that of the state of North Carolina overall as well as the US rate.

Inside this Data Brief

Progress Toward Objectives	2
Births by Race and Ethnicity	2
Teen Pregnancy	
Teens Pregnancies, Abortions and Live Births	3
Trends in Teen Pregnancies	3
Prenatal Care	
Month Entering Prenatal Care, by Race	4
Late or no Prenatal Care, by Race	4
Completed Weeks Gestation	
Weeks Gestation, 2011-2014	5
Preterm Births by Race, Trends	5
Birth Weight	
Birth Weights, 2004-2014	6
Low and Very Low Birthweight	6
Low and Very Low Birthweight Trends	7
Infant Mortality	
Infant Mortality, by Race, 2004-2014	8
Infant Mortality Trends in Guilford, NC and US	9
Infant Mortality rates by Race/Ethnicity, Guilford County and NC	9
Detailed Infant Causes of Death	10

Birth Outcome Objectives from the 2014 Guilford County Community Health Action Plan

- **Objective:**
 - Reduce rates of preterm births by 5% to below 10% by Dec. 31, 2016
 - Reduce preterm birth racial disparity between Whites and African Americans to a ratio of 1.2 by Dec. 31, 2016
 - Reduce the infant mortality rate (per 1,000 live births) to 7.1 per 1,000 live births by Dec. 31, 2016
 - Reduce the 5-year infant mortality rate racial disparity between whites and African Americans to a ratio of 2.2 by Dec. 31, 2016
- **2012 Baseline:**
 - Preterm birth percentage: 10.5%
 - Preterm birth racial disparity, Ratio between African American and White preterm rate: 1.4
 - Infant mortality rate: 7.9 per 1000 live births
 - Infant mortality racial disparity, ratio between African-Americans and White infant mortality rates: 2.47 (2008-2012)
- **2014 Progress toward Objectives**
 - Preterm birth percentage: 10.5% (*no change*)
 - Preterm birth racial disparity; ratio between African American and White preterm rate = 1.5 (*negative change*)
 - Infant mortality rate: 7.9 per 1,000 live births (*no change*)
 - Infant mortality racial disparity, ratio between African American and White infant mortality rates = 3.6 (*negative change*)



- As a percentage of total live births. White births are declining, while African American births are increasing, making up the majority of births since 2011;
- Hispanic births made up 13% of all births in 2014.

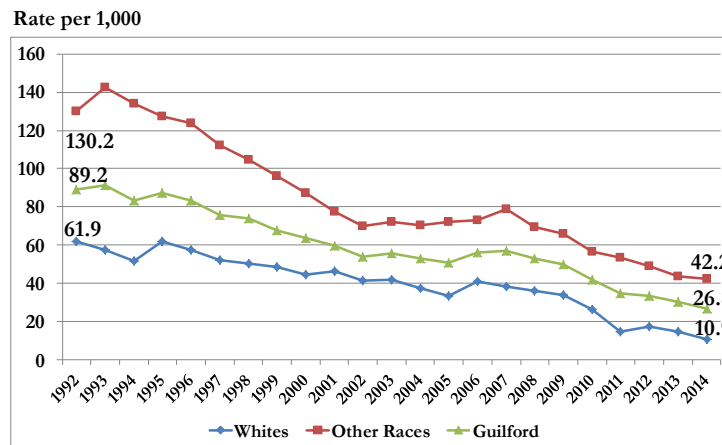
Teen Pregnancy in Guilford County

Teen Pregnancies, Abortions and Live Births, by Race, 2014

	All Races	Whites	African-Americans
Pregnancies Ages 10-14	12	0	11
Pregnancies Ages 15-19	504	106	305
Total Pregnancies Ages 10-19	516	106	316
Pregnancy Rate per 1,000 Females Ages 10-14	0.7	0.0	1.7
Pregnancy Rate per 1,000 Females Ages 15-19	26.8	10.9	38.5
Total Pregnancy Rate per 1,000 Females Ages 10-19	14.6	5.8	21.8
Abortions Ages 10-14	4	0	3
Abortions Ages 15-19	149	29	99
Total Abortions Ages 10-19	153	29	102
Abortion Rate per 1,000 Females Ages 10-14	0.2	0.0	0.5
Abortion Rate per 1,000 Females Ages 15-19	7.9	3.0	12.5
Abortion Rate per 1,000 Females Ages 10-19	4.3	1.6	7.0
Live Births Ages 10-14	8	0	8
Live Births Ages 15-19	349	76	202
Total Live Births Ages 10-19	357	76	210
Birth Rate per 1,000 Females Ages 10-14	0.5	0.0	1.2
Birth Rate per 1,000 Females Ages 15-19	18.6	7.8	25.5
Birth Rate per 1,000 Females Ages 10-19	10.1	4.1	14.5
FEMALE POPULATION 10-14	16,435	8,683	6,596
FEMALE POPULATION 15-19	18,880	9,722	7,930
TOTAL FEMALE POP. 10-19	35,235	18,405	14,526

Source: NC State Center for Health Statistics.

Pregnancy Rate per 1,000 Females Ages 15-19 By Race, Guilford County, 1992-2014



Source: Data provided by the NC Center for Health Statistics.
Chart prepared by the GCDHHS, Division of Public Health.

Prenatal Care

Prenatal visits are important for the health of both infant and mother. Health care providers can educate mothers on important health issues, such as their diet and nutrition, exercise, immunizations, weight gain, and abstaining from tobacco, alcohol and other drugs. Late entry into prenatal care is defined as beginning prenatal care after the first three months of pregnancy. Mothers who receive no prenatal care are more likely to give birth to low birthweight and preterm babies.

Month Entering into Prenatal Care, by Race and Hispanic Status, 2014						
Month Entering Prenatal Care	White	Black or African-American	American Indian	Asian	Other Non-White	Hispanic
1	73	47	0	8	5	8
	2.9%	1.9%	0.0%	1.7%	.8%	1.0%
2	756	414	8	68	56	96
	30.2%	16.7%	27.6%	14.5%	9.3%	12.4%
3	1045	742	6	162	157	212
	41.7%	29.9%	20.7%	34.6%	26.0%	27.4%
4	249	436	6	74	135	164
	9.9%	17.6%	20.7%	15.8%	22.3%	21.2%
5	145	301	5	50	102	118
	5.8%	12.1%	17.2%	10.7%	16.9%	15.2%
6	93	186	1	46	62	73
	3.7%	7.5%	3.4%	9.8%	10.2%	9.4%
7	53	122	2	25	35	43
	2.1%	4.9%	6.9%	5.3%	5.8%	5.5%
8	31	86	0	19	18	24
	1.2%	3.5%	0.0%	4.1%	3.0%	3.1%
9	20	54	1	2	15	18
	.8%	2.2%	3.4%	0.4%	2.5%	2.3%
No prenatal Care	14	52	0	4	6	6
	.6%	2.1%	0.0%	0.9%	1.0%	.8%
Unknown	25	39	0	10	14	13
	1.0%	1.6%	0.0%	2.1%	2.3%	1.7%
Total	2,504	2,479	29	468	605	775
Total Percent	100%	100%	100%	100%	100%	100%

Source: NC State Center for Health Statistics.

Percentage of Births to Mothers Receiving Late or No Prenatal Care				
	2011	2012	2013	2014
Overall	24.2	23.7	34.8	40.3
White	12.6	12.7	19.3	24.2
African-American	30.0	30.2	42.6	49.9
Hispanic	43.6	38.7	55.4	57.5

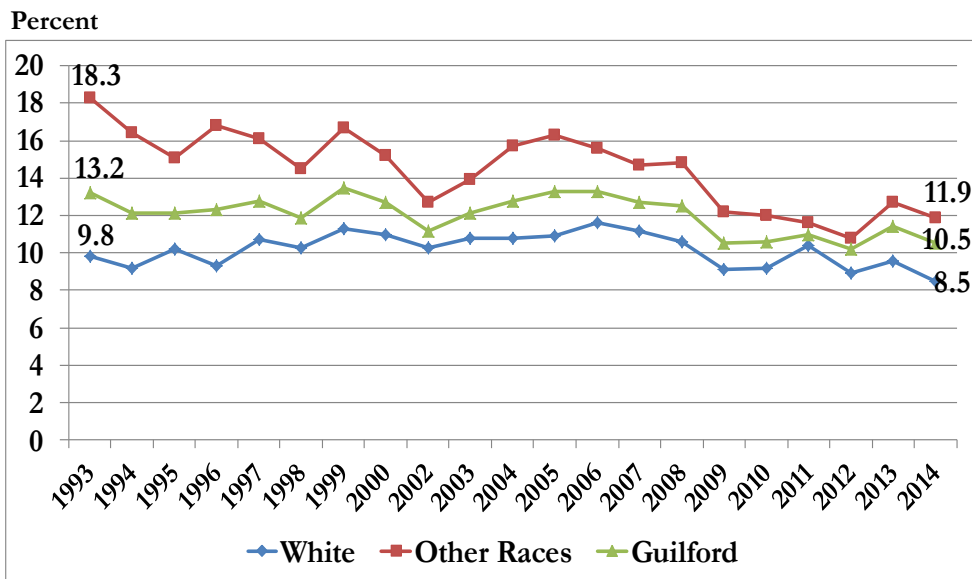
Source: NC State Center for Health Statistics.

Completed Weeks of Gestation, All Births Guilford County, 2011-2014

Number of Births by Completed Weeks of Gestation				
	2011	2012	2013	2014
<28 weeks (Extremely preterm)	68	55	70	61
28 to 31 weeks (Very preterm)	80	54	60	83
32 to 36 weeks (Moderate to late preterm)	521	538	576	494
37 weeks plus (Normal term)	5,373	5,506	5,451	5,442
Unknown	7	11	12	5
Total Number	6,049	6,164	6,169	6,085
Percent of Births by Completed Weeks of Gestation				
<28 weeks (Extremely preterm)	1.1	0.9	1.1	1.0
28 to 31 weeks (Very preterm)	1.3	0.9	1.0	1.4
32 to 36 weeks (Moderate to late preterm)	8.6	8.7	9.3	8.1
37 weeks plus (Normal term)	88.8	89.3	88.4	89.5
Unknown	0.1	0.2	0.2	.08
Premature Births—Less than 37 Weeks Gestation				
Number	669	647	706	638
Percent	11.1	10.5	10.0	10.5

Source: NC Center for Health Statistics; North Carolina Birth Certificate File
 Note: Percentages represent the obstetric estimate of gestational age.

Percent of Births Preterm (Less than 37 Weeks Gestation) By Race, Guilford County, 1993-2014



Source: Data provided by the NC Center for Health Statistics.
 Chart prepared by the GCDHHS, Division of Public Health.

Low and Very Low Birthweight

Birth Weights in Guilford County, 2004-2014

Number of Births by Birth Weight Category

Birth Weights	2004	2005	2006	2007	2008	2009	2010	2011	2012	2013	2014
Very Low Birth Weight Less than 1,500 grams	135	121	123	144	122	146	111	143	107	118	131
1,500-2,499 grams	392	441	450	476	473	446	453	451	466	461	462
Normal Weight 2,500+ grams	5,334	5,435	5,546	5,676	5,786	5,558	5,439	5,455	5,588	5,590	5,489
Total Births	5,861	6,000	6,119	6,296	6,381	6,150	6,003	6,049	6,164	6,169	6,085

Percent of Births by Birth Weight Category

Very Low Birth Weight Less than 1,500 grams	2.3	2.0	2.0	2.3	1.9	2.4	1.8	2.4	1.7	1.9	2.2
1500-2,499 grams	6.7	7.4	7.4	7.6	7.4	7.3	7.5	7.5	7.6	7.5	7.6
Normal Weight 2500+ grams	91.0	90.6	90.6	90.2	90.7	90.4	90.6	90.2	90.7	90.6	90.2

Low Birth Weight Births—Under 2,500 Grams

Number Low Birth Weight Less than 2,500 grams	527	562	573	620	595	592	564	594	573	579	593
Percent Low Birth Weight	9.0	9.4	9.4	9.8	9.3	9.6	9.4	9.8	9.3	9.4	9.7

Source: NC Center for Health Statistics; North Carolina Birth Certificate File.

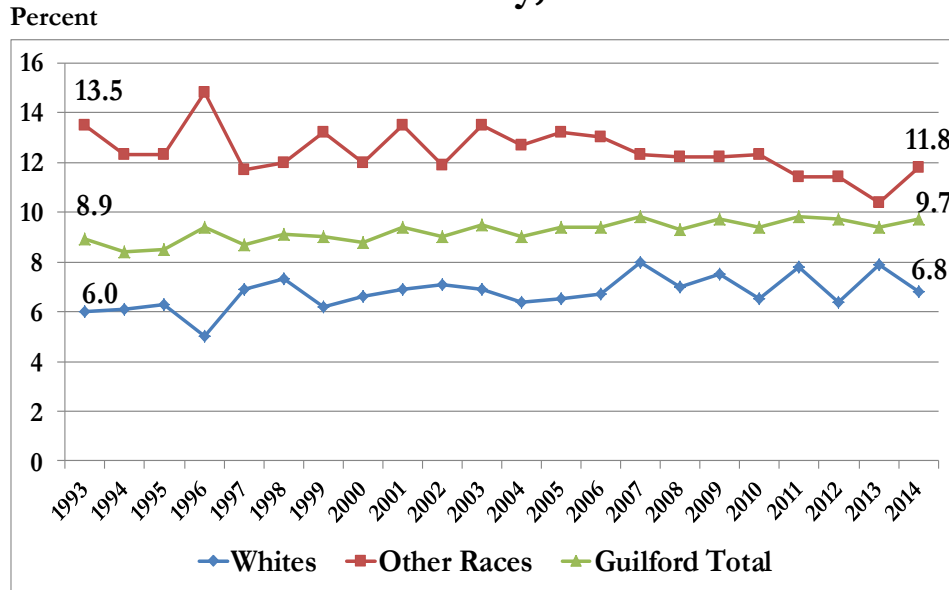
Note: Birth weights under 2,500 grams (five pounds eight ounces) are classified as low birth weight; Birth weights under 1,500 grams (three pounds five ounces) are classified as very low birth weight.

Low and Very Low Birthweight, by Race and Ethnicity, Guilford County and North Carolina, 2010-2014

	Birth Weight	Total		White		Black		Hispanic	
		Births	Percent	Births	Percent	Births	Percent	Births	Percent
North Carolina	Low	53,990	9.0	25,222	7.5	19,815	13.8	6,002	6.7
	Very Low	10,438	1.7	4,293	1.3	4,600	3.2	1,090	1.2
Guilford County	Low	2,910	9.6	877	7.1	1,554	12.9	267	6.9
	Very Low	612	2.0	164	1.3	371	3.1	56	1.5

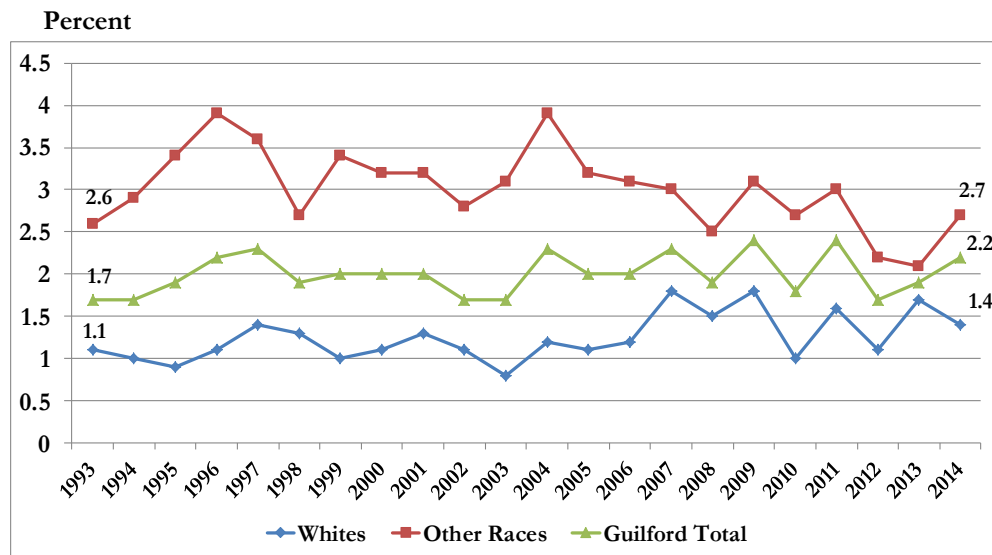
Source: NC Center for Health Statistics, County Health Databook.

Percent of Births Low Birthweight* by Race Guilford County, 1993-2014



Note: *2,500 grams (about 5 ½ pounds) and under.
Source: Data provided by the NC Center for Health Statistics.
Chart prepared by the GCDHHS, Division of Public Health.

Percent of Births Very Low Birth Weight* by Race, Guilford County, 1992-2014



Note: *1500 grams (about 3 ½ pounds) and under
Source: Data provided by the NC Center for Health Statistics.
Chart prepared by the GCDHHS, Division of Public Health.

Infant Mortality in Guilford County

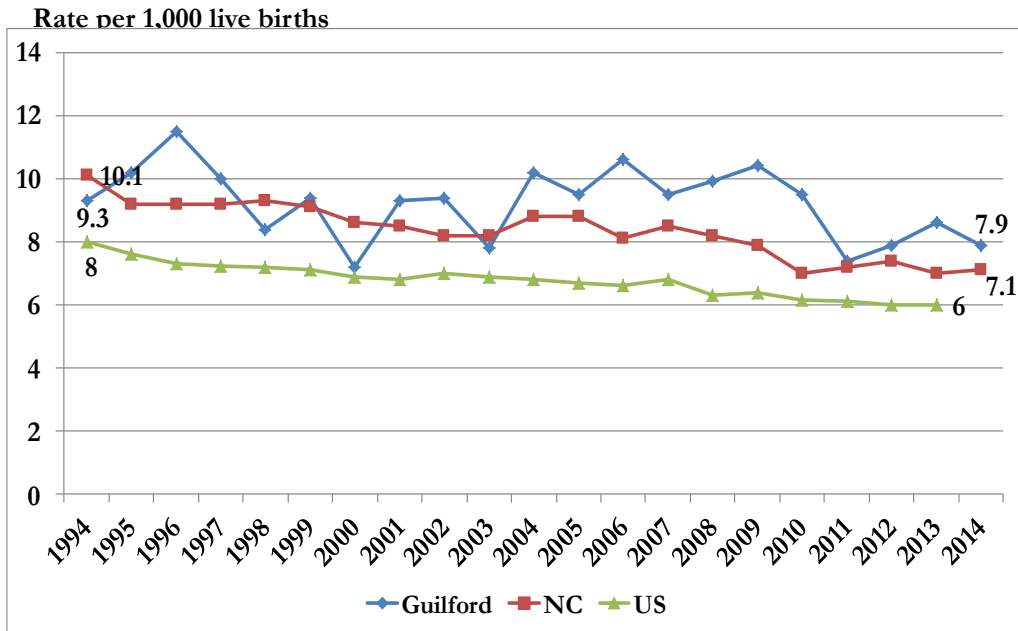
**Infant Deaths per 1,000 Live Births, by Race/Ethnicity
Guilford County, 2004-2014**

Number of Infant Deaths											
	2004	2005	2006	2007	2008	2009	2010	2011	2012	2013	2014
Guilford County All Races	60	57	65	60	63	64	57	45	49	53	48
White	16	20	31	21	26	17	25	10	16	20	9
African Americans						45	31	30	26	32	33
Hispanic							9	5	5	3	4
Infant Mortality Rate per 1,000 Live Births											
Guilford County All Races	10.2	9.5	10.6	9.5	9.9	10.4	9.5	7.4	7.9	8.6	7.9
White	4.6	5.8	8.8	5.9	7.4	5.1	6.4	3.9	6.5	8.0	3.8
African American						18.6	13.2	12.7	10.7	12.7	13.6
Hispanic							11.8	6.7	6.3	3.7	5.2
Number of Live Births											
Guilford County All Races	5,861	6,000	6,119	6,296	6,381	6,150	6,003	6,049	6,164	6,169	6,085
White	3,445	3,462	3,513	3,548	3,563	3,349	3,013	2,549	2,460	2,503	2,370
African American						2,418	2,341	2,367	2,429	2,519	2,434
Hispanic							759	741	790	804	774

Source: NC Live Birth File: NC Center for Health Statistics.

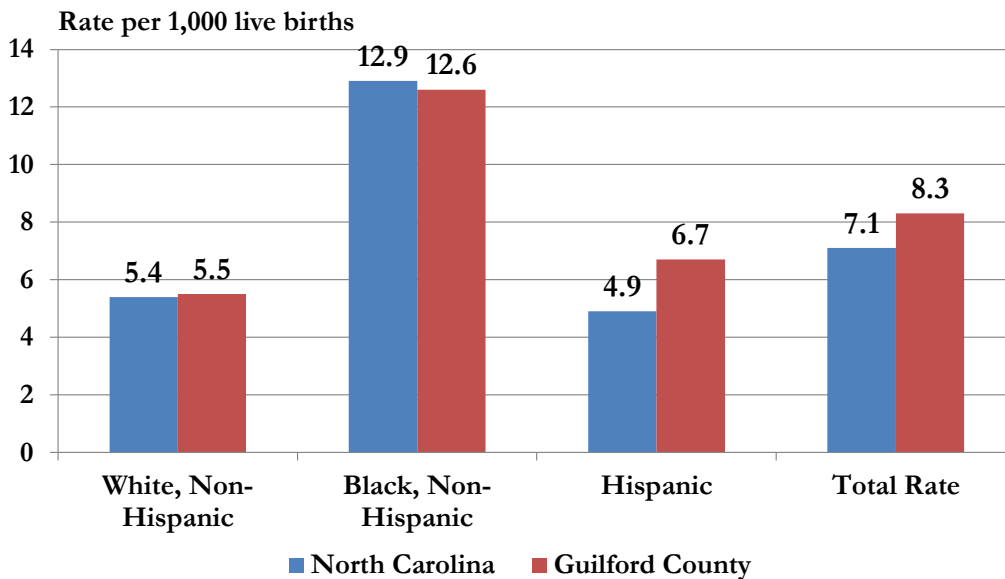
- After increasing to 8.6 infant deaths per 1,000 live births in 2013, the infant mortality rate declined in 2014 to 7.9. The White rate declined to a historically low rate of 3.8, while the Black/African-American rate increased to 13.6. The Hispanic rate was 5.2 infant deaths per 1,000 live births.
- The leading causes of infant death in 2014 were maternal complications of pregnancy, disorders related to short gestation and low birth weight, congenital malformations, deformations and chromosomal abnormalities and respiratory and cardiovascular disorders originating in the perinatal period.

Infant Mortality Rate, 1994-2014 Guilford County, North Carolina and United States



Source: Data provided by the NC Center for Health Statistics.
Chart prepared by the GCDHHS, Division of Public Health.

Infant Mortality Rates, by Race/Ethnicity, Guilford County and North Carolina, 2010-2014



Source: Data provided by the NC Center for Health Statistics.
Chart prepared by the GCDHHS, Division of Public Health.

