

Guilford County

Demographics

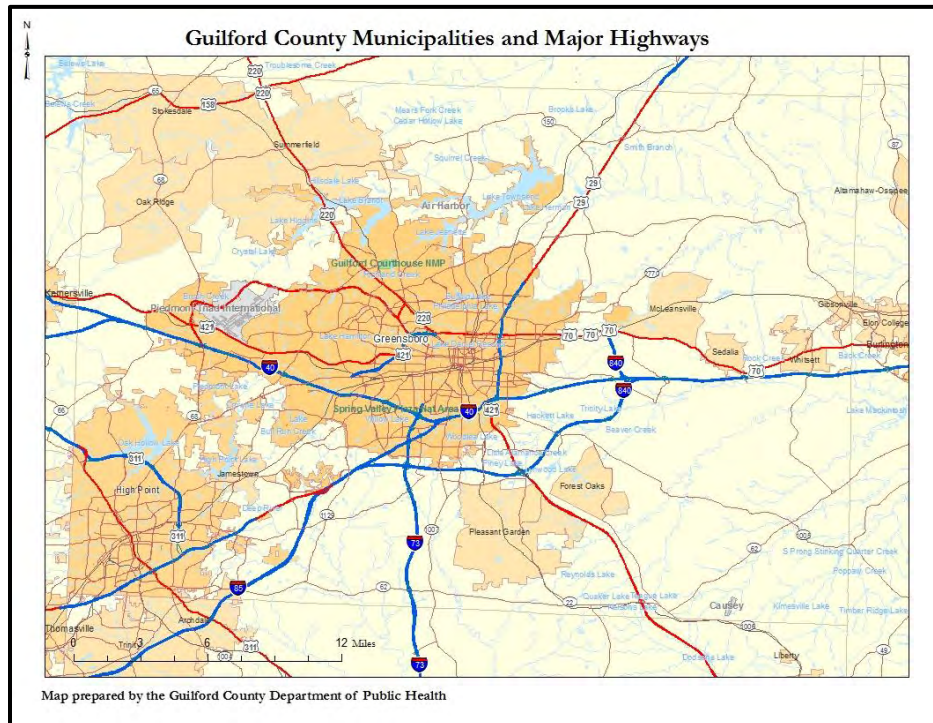
Population Trends

- The estimated 2011 population for Guilford County was 495,279, as compared to 488,406 in 2010.
- From 2000 to 2010, the state as a whole and Alamance, Forsyth and Guilford counties experienced population growth of over 18%.

Comparison of Population of North Carolina and CHNA Counties, 2000, 2010 and 2011 Estimate

Residence	2000	2010	Percentage Change	2011 Estimate
North Carolina	8,049,313	9,535,483	18.5%	9,752,073
Alamance	127,049	151,131	19.0%	152,801
Davidson	145,350	162,878	12.1%	163,077
Forsyth	296,118	350,670	18.4%	354,952
Guilford	407,071	488,406	19.9%	495,279
Randolph	129,109	141,752	9.8%	142,358
Rockingham	90,742	93,643	3.2%	93,329

Source: American Community Survey, U.S. Census Bureau, 2000, 2010, 2011.



This table provides a comparison of the population change for select Guilford County cities and towns between 2000 and 2010.

Comparison of 2000 and 2010 Population Guilford County Municipalities

- Oak Ridge, Stokesdale and Summerfield have seen the greatest percentage growth, at 55.1%, 54.5% and 48.4% respectively.
- Guilford County as a whole and Greensboro, High Point and Jamestown have seen moderate growth.
- Pleasant Garden and Whitsett have decreased in population and Sedalia has remained about the same.

Guilford County Municipalities	2000	2010	Percentage Growth
Guilford County	421,048	488,406	16.0%
Greensboro	223,891	269,666	20.4%
High Point (part)	84,656	104,371	23.3%
Jamestown	3,088	3,382	9.5%
Oak Ridge	3,988	6,185	55.1%
Pleasant Garden	4,714	4,489	-4.8%
Sedalia	618	623	0.8%
Stokesdale	3,267	5,047	54.5%
Summerfield	6,894	10,232	48.4%
Whitsett	686	590	-14.0%

Source: American Community Survey, U.S. Census Bureau, 2000, 2010.

Age and Gender

- The 2007-2011 Guilford County population has an estimated median age of 36.3 years, slightly younger than the median age of the surrounding counties.
- The gender distribution is similar in North Carolina, Guilford County and surrounding counties, with slightly more females than males.
- Based on 2013 population estimates for NC and Guilford peer counties, the Guilford County median age is close to that of the state as a whole, as is the gender distribution.

Median Age and Gender Distribution of North Carolina and CHNA Counties, 2007-2011

Residence	Median Age	Male		Female	
		Number	Percentage	Number	Percentage
North Carolina	37.3	4,588,579	48.7%	4,830,157	51.3%
Alamance	38.4	71,113	47.6%	78,326	52.4%
Davidson	40.0	79,474	49.1%	82,250	50.9%
Forsyth	37.2	165,135	47.5%	182,432	52.5%
Guilford	36.3	230,034	47.6%	253,047	52.4%
Randolph	39.5	69,385	49.2%	71,531	50.8%
Rockingham	42.0	45,069	48.3%	48,324	51.7%

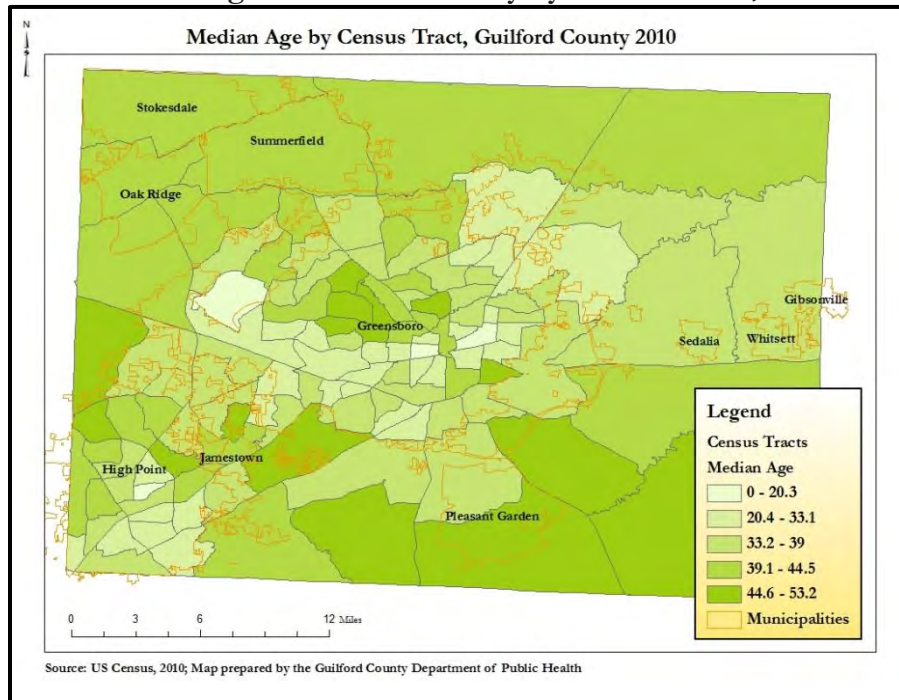
Source: American Community Survey, U.S. Census Bureau, 2007-2011 estimates.

Median Age and Gender Distribution of Guilford and Peer Counties, 2013

Residence	Median Age	Male		Female	
		Number	Percentage	Number	Percentage
Cumberland	31.0	159,110	48.8	166,761	51.2
Durham	34.2	137,911	47.9	150,222	52.1
Forsyth	38.1	171,381	47.4	189,839	52.6
Guilford	37.2	241,178	47.6	265,432	52.4
Mecklenburg	34.5	477,491	48.2	513,486	51.8
Wake	35.2	474,726	48.7	499,563	51.3
North Carolina	37.9	4,795,976	48.7	5,052,082	51.3

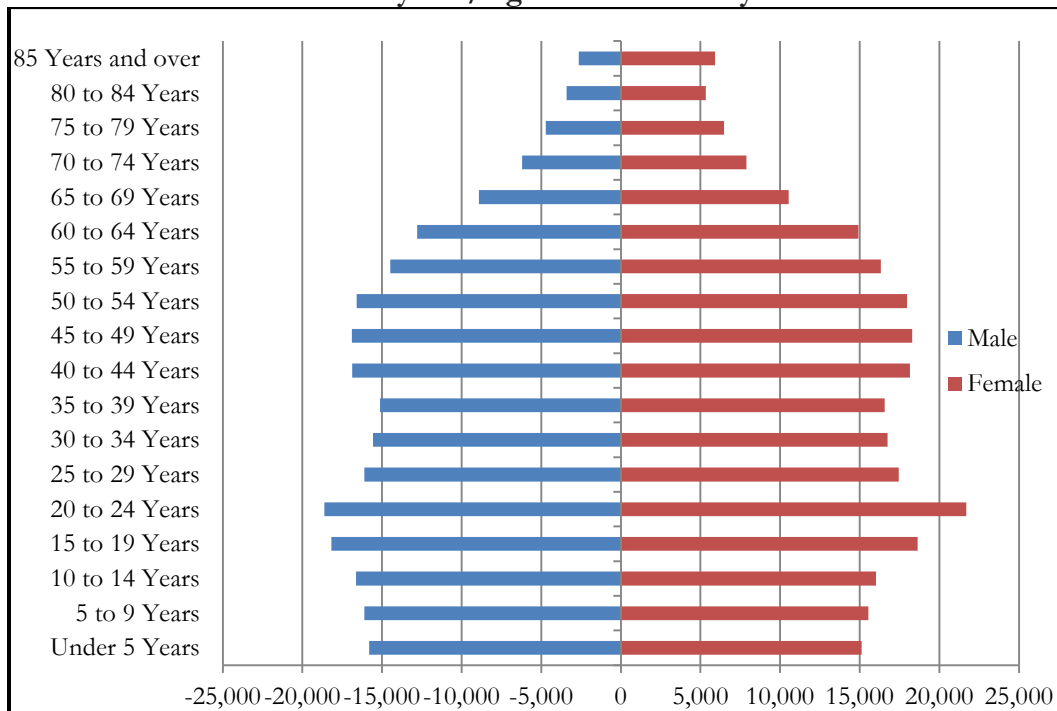
Source: American Community Survey, U.S. Census Bureau, 2013

Median Age of Guilford County by Census Tract, 2010



- The map above illustrates the median age of Guilford County by census tracts. Median age exhibits large variation geographically, with median ages less than age 25 in census tracts in southeast Greensboro and central High Point and up to ages 45-53 in northwest Greensboro, Jamestown and rural areas of southeast Guilford County.
- The following table below compares the 2011 estimated distribution of males and females in Guilford County within major age groups. Up to the age of 14, males predominate as a percentage of the population, but in older age groups females make up a larger proportion.

Guilford County Sex/Age Distribution Pyramid 2011



Source: American Community Survey, U.S. Census Bureau, 2011 estimates.

2011 Population Estimates by Age, Race and Gender

Guilford County 2011 Population Estimates by Age, Race and Gender enumerated on July 1, 2011 (based on the 2010 census)*							
	Total	Race/Ethnicity				Gender	
		White Non-Hispanic	African American Non-Hispanic	Other Non-Hispanic	Hispanic	Male	Female
Age	495,279	271,355	164,276	23,453	36,195	235,653	259,626
0-4	30,930	12,593	11,928	1,693	4,716	15,802	15,128
5-9	31,655	14,067	11,631	1,849	4,108	16,107	15,548
10-14	32,659	15,253	12,215	1,952	3,239	16,639	16,020
15-19	36,806	16,881	15,020	1,934	2,971	18,172	18,634
20-24	40,312	18,251	16,889	1,940	3,232	18,628	21,684
25-29	33,570	16,157	12,017	1,986	3,410	16,113	17,457
30-34	32,320	15,306	11,426	1,811	3,777	15,563	16,757
35-39	31,694	15,497	10,918	2,045	3,234	15,131	16,563
40-44	35,031	18,919	11,855	1,895	2,362	16,872	18,159
45-49	35,190	20,558	11,270	1,623	1,739	16,889	18,301
50-54	34,572	21,724	10,183	1,395	1,270	16,590	17,982
55-59	30,796	20,311	8,678	1,056	751	14,479	16,317
60-64	27,708	19,034	7,290	852	532	12,796	14,912
65-69	19,461	13,936	4,568	612	345	8,921	10,540
70-74	14,077	10,209	3,256	394	218	6,194	7,883
75-79	11,190	8,595	2,215	238	142	4,710	6,480
80-84	8,747	7,033	1,525	98	91	3,409	5,338
85+	8,561	7,031	1,392	80	58	2,638	5,923

* Based on Population files obtained from the U.S. Census Bureau in collaboration with the National Center for Health Statistics; Source: North Carolina County Health Data Book - 2013 Division of Public Health N.C. Department of Health and Human Services State Center for Health Statistics.

- The age distribution of the Guilford County population differs by race. Whites make up a higher proportion of middle aged and older residents than African-Americans or Hispanics. African-Americans have a higher proportion of children and a lower percentage of elderly than is true of Whites, but Hispanics have the youngest age distribution.

Race and Ethnicity

Racial Distribution of North Carolina and CHNA Counties, 2007–2011 Estimates

Residence	White		Black/African American		American Indian/Alaska Native		Asian		Native Hawaiian/Other Pacific Islander		Some Other Race		Two or More Races	
	#	%	#	%	#	%	#	%	#	%	#	%	#	%
North Carolina	6,560,948	69.7	2,016,228	21.4	108,960	1.2	202,815	2.2	4,725	0.05	336,670	3.6	188,390	2.0
Alamance	104,484	69.9	27,015	18.1	332	0.2	1,904	1.3	95	0.1	11,843	7.9	3,766	2.5
Davidson	138,821	85.8	14,791	9.1	738	0.5	2,282	1.4	18	0.0	3,393	2.1	1,681	1.0
Forsyth	223,621	64.3	90,561	26.1	850	0.2	6,440	1.9	233	0.1	20,417	5.9	5,445	1.6
Guilford	281,403	58.3	156,148	32.3	2,531	0.5	19,180	4.0	73	0.0	14,840	3.1	8,906	1.8
Randolph	122,214	86.7	8,025	5.7	573	0.4	1,301	0.9	5	0.0	6,809	4.8	1,989	1.4
Rockingham	70,776	75.8	17,577	18.8	247	0.3	371	0.4	27	0.0	2,659	2.8	1,736	1.9

Source: American Community Survey, U.S. Census Bureau, 2007-2011 estimates.

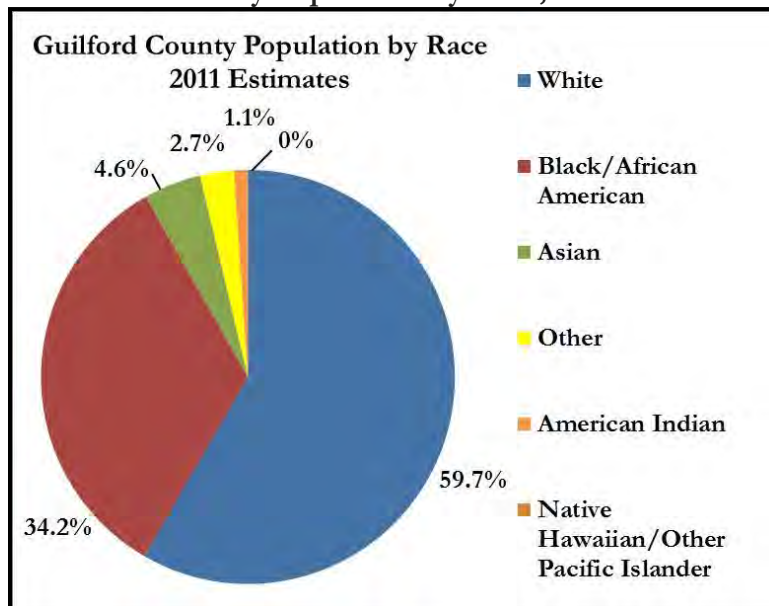
Racial Distribution of North Carolina Guilford peer Counties, 2013

Residence	White		Black/African American		American Indian/ Alaska Native		Asian		Two or More Races	
	#	%	#	%	#	%	#	%	#	%
Cumberland	169,168	51.9	119,690	36.7	4,024	1.2	7,724	2.4	18,825	5.8
Durham	146,982	51.0	108,783	37.8	550	0.2	12,594	4.4	8,813	3.6
Forsyth	240,422	66.6	92,888	25.7	1,248	0.3	7,045	2.0	5,968	1.7
Guilford	284,657	56.2	171,505	33.9	3,307	0.7	22,430	4.4	9,823	1.9
Mecklenburg	549,035	55.4	311,468	31.4	3,333	0.3	48,208	4.9	25,685	2.6
Wake	662,264	68.0	200,149	20.5	2,999	0.3	58,753	6.0	21,418	2.2
North Carolina	6,811,501	69.2	2,121,712	21.5	112,630	1.1	238,502	2.4	236,144	2.4

Source: American Community Survey, U.S. Census Bureau, 2013 estimates.

- Whites made up 69.7% of the population of North Carolina in 2007-2011. Regionally, there was variability across counties, with percentages of Whites highest in Davidson, Randolph and Rockingham counties and lowest in Guilford and Forsyth counties. Among Guilford peer counties, Cumberland, Durham and Mecklenburg counties had lower proportions of white residents than did Guilford (2013)
- Among CHNA Region counties, Guilford and Forsyth counties had the highest percentage of those who identified as Black/African American, 32.3% and 26.1%, respectively. Randolph County had the lowest percentage at 5.7%. Among peer counties, Cumberland and Durham counties had higher African-American proportions (2013)
- In Guilford County, 4.0% of the population identified as Asian, higher than North Carolina and other CHNA counties.

Guilford County Population by Race, 2011 Estimates



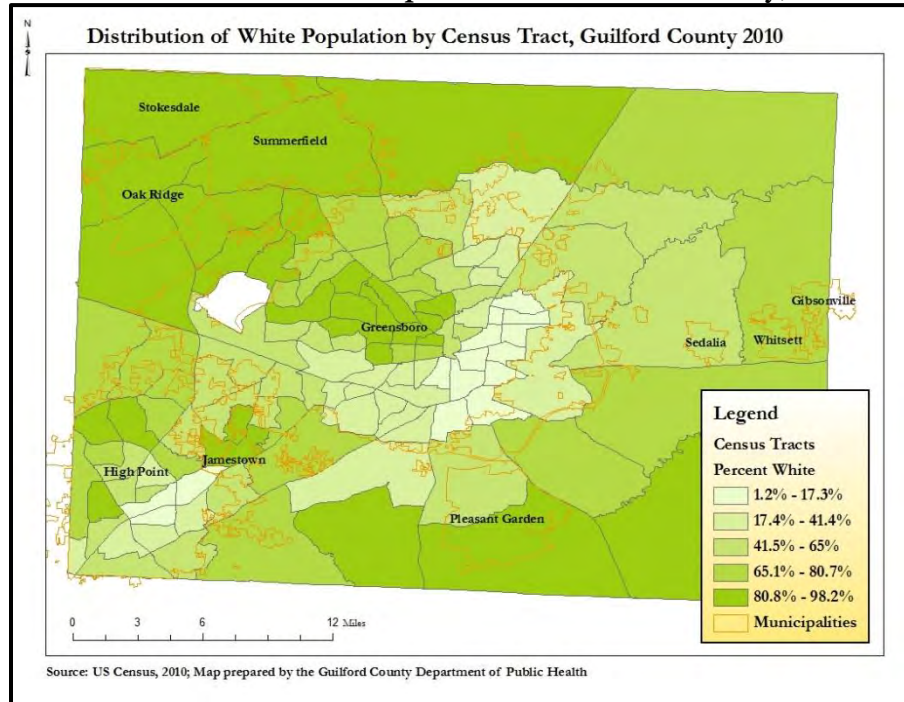
Source: American Community Survey, U.S. Census Bureau, 2011 estimates.

- Of the estimated 495, 279 individuals living in Guilford County in 2011, approximately 59.7% were White, 34.2% were African American, 4.1% were Asian and 1.1% were American Indian/Alaskan Native. The Latino population (of any race) was estimated at 7.3%.

Geographic Distribution

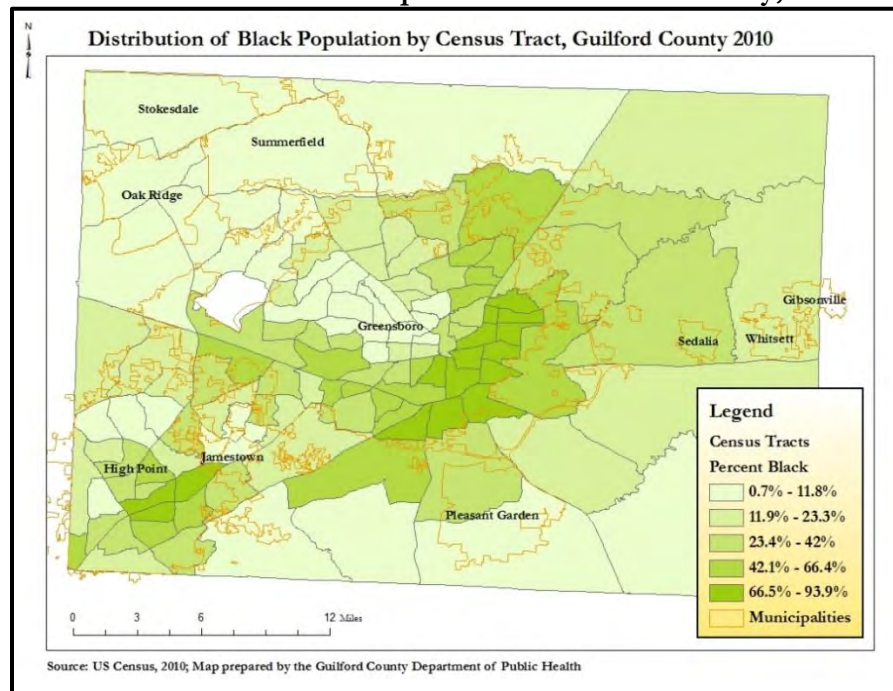
- The following maps illustrate the racial and ethnic distribution of those who call Guilford County home.
- The percentage of Whites by census tract varies from as low as 1.2-17.3% in Southeast Greensboro and Central High Point to as high as 82.8-98.2% in northwest Greensboro, and northwest and southeast Guilford rural areas.

Distribution of White Population in Guilford County, 2010

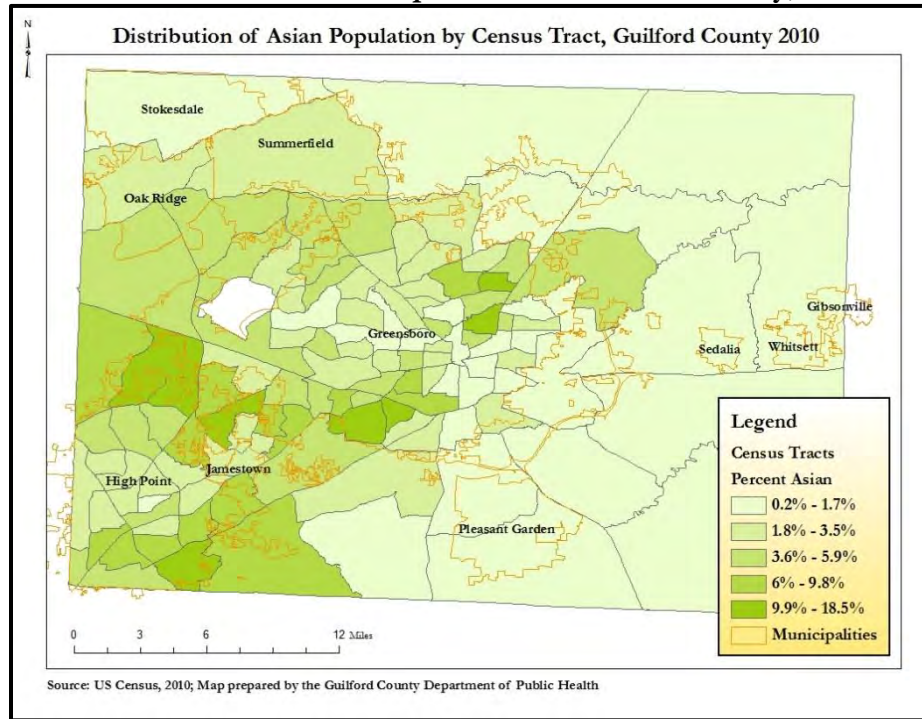


- The Black/African-American population is concentrated in census tracts in southeast Greensboro and central High Point, where the percentage ranges from 68.9-93.9%.

Distribution of Black Population in Guilford County, 2010



Distribution of Asian Population in Guilford County, 2010



- While the Asian population comprises just under 4.6% of the county as a whole, in some tracts in South, West and East Greensboro and South High Point, the county's Asian residents makes up as high as 9.9-18.5% of tract populations.
- According to Census Bureau population estimates, 8.1% of North Carolina population identified as Hispanic.
- There was some Hispanic variability across CHNA counties, with percentages highest in Alamance, Forsyth and Randolph counties (10-11%) and lowest in Davidson, Guilford and Rockingham counties (5-7%).
- Hispanic residents make up 6.9% of Guilford County as a whole, but make up as high as 25.8-53.4% in several census tracts in South Greensboro and South High Point.
- Among peer counties, Guilford County in 2013 had the lowest percentage of Hispanic residents at 7.5 and lower than the state as a whole (8.9%)

Hispanic Distribution of North Carolina and CHNA Counties

Residence	Number	Percentage
North Carolina	764,707	8.1%
Alamance	16,106	10.8%
Davidson	10,040	6.2%
Forsyth	39,628	11.4%
Guilford	22,316	6.9%
Randolph	14,330	10.2%
Rockingham	4,2340	5.3%

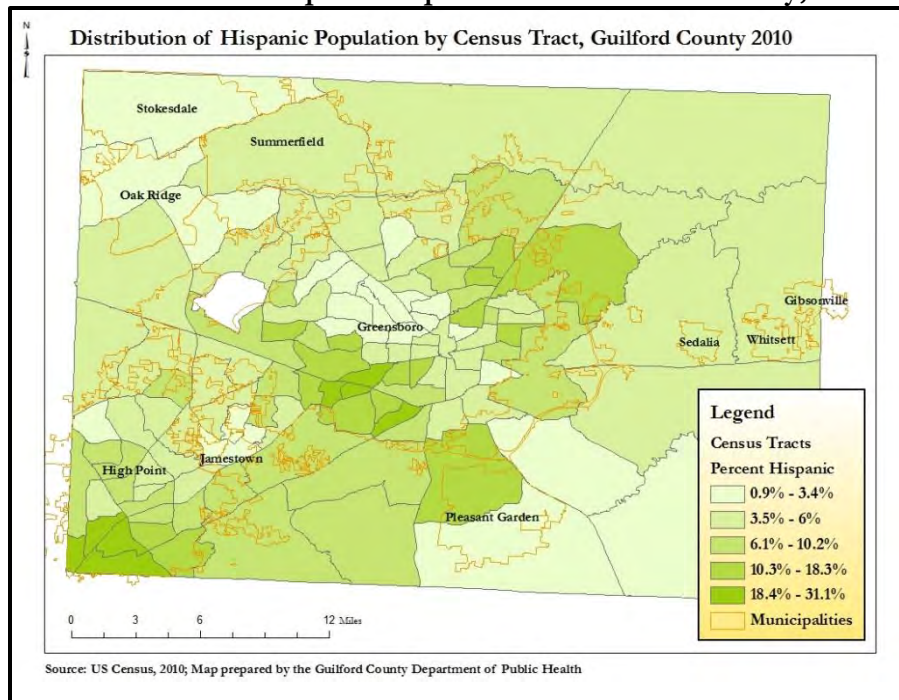
Source: American Community Survey, U.S. Census Bureau, 2007-2011 estimates.

Hispanic Distribution, Guilford Peer Counties, 2013

Residence	Number	Percentage
Cumberland	34,938	10.7
Durham	38,849	13.5
Forsyth	44,934	12.4
Guilford	37,841	7.5
Mecklenburg	124,800	12.6
Wake	96,954	10.0
North Carolina	867,205	8.8

Source, American Community Survey, 2013

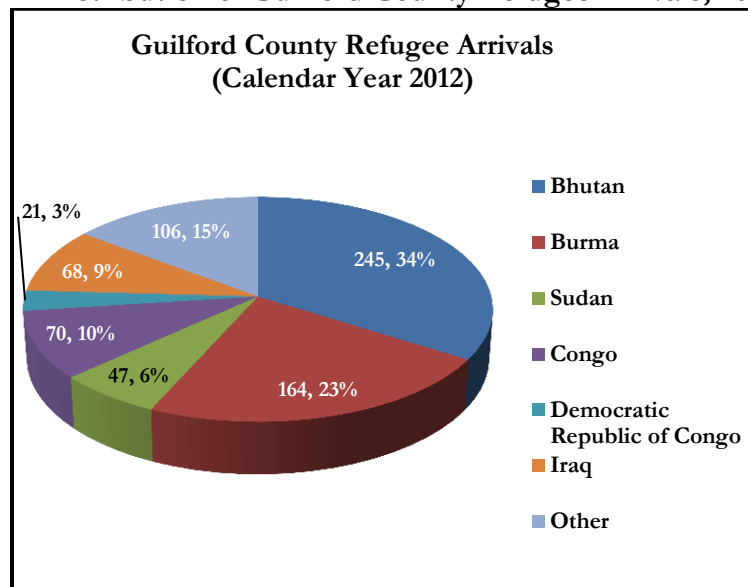
Distribution of Hispanic Population in Guilford County, 2010



New Arrivals

- Guilford County is a refugee resettlement area and has hosted thousands of refugees from Asia, Africa and South and Central America.
- According to the three refugee resettlement agencies in Guilford County (African Services Coalition, Church World Services and World Relief Refugee Services), there were 721 new refugee arrivals in Guilford County in 2012. Of those new arrivals, over 50% were from either Bhutan or Burma.
- 10% were from Congo, 9% from Iraq, 6% from Sudan and 3% from the Democratic Republic of Congo.

Distribution of Guilford County Refugee Arrivals, 2012



* Groups comprising “other” include countries of origin with less than 20 people arriving in Guilford County. These countries include: Afghanistan (n=3), Cuba (n=17), Ivory Coast (n=2), Somalia (n=6), Liberia (n=2), Tanzania (n=5), Ethiopia (n=18), Libya (n=7), Nepal (n=13), Eritrea (n=7), Moldova (n=4), Ukraine (n=11), Vietnam (n=2), and Iran (n=9).

** These data represent refugee arrivals from January 1, 2012 through November 30, 2012.

Households and Families

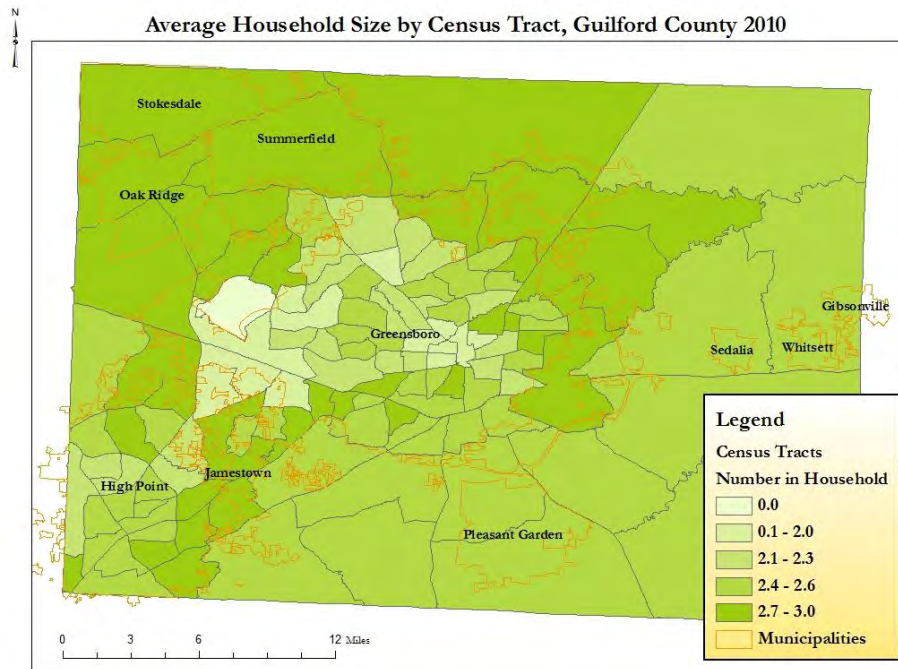
Number of Households and Average Household Size in North Carolina and Guilford County

Residence	Total Number of Households	Average Household Size
North Carolina	3,664,119	3.06
Guilford	192,064	2.44

Source: American Community Survey, U.S. Census Bureau, 2007-2011 estimates.

- A household includes all the persons who occupy a housing unit as their usual place of residence. The average household size in North Carolina is 3.06 persons, slightly higher than the 2.44 average in Guilford County.
- The tracts with the lowest average household size are located in suburban tracts in northwest and west Greensboro. The highest average household size is found in tracts in exurban and rural tracts bordering on Greensboro and some urban and suburban High Point tracts.

Average Household Size in Guilford County, 2010



Source: US Census, 2010; Map prepared by the Guilford County Department of Public Health

Family Households in North Carolina and Guilford County

Family Households								
Residence	Total		Married Couple		Male Householder (no wife present)		Female Householder (no husband present)	
	Number	%	Number	%	Number	%	Number	%
North Carolina	2,448,907	66.8%	1,810,499	49.4%	155,092	4.2%	483,316	13.2%
Guilford	119,849	62.4%	83,483	43.5%	8,941	4.7%	27,425	14.3%

Source: American Community Survey, U.S. Census Bureau, 2007-2011 estimates.

- There were an estimated 3,664,119 total households in North Carolina according to 2007-2011 estimates, with about 67% identified as family households.
- Guilford County had a slightly lower proportion of family households at 62.4%. Of the family households, the majority were married couples (43.5%), followed by female householders with no husband present (14.3%) and male householders with no wife present (4.7%).

Other Households in North Carolina and Guilford County

Other Households						
Residence	Total		Householder living alone		65 years and older	
	Number	%	Number	%	Number	%
North Carolina	1,215,212	33.2%	1,012	27.6%	854,689	9.1%
Guilford	72,215	37.6%	59,714	31.1%	16,976	8.8%

Source: American Community Survey, U.S. Census Bureau, 2007-2011 estimates.

- Of the other households in North Carolina, the majority were householders who lived alone. Guilford County had slightly higher percentages of householders who lived alone compared to North Carolina and surrounding counties.
- Approximately 9% of all households were householders 65 years of age and older.

Types of Households with Children under Age 18 in North Carolina and Guilford County

Residence	Households with own children under 18							
	Total		Married Couple		Male Householder, no wife present		Female householder, no husband present	
	Number	%	Number	%	Number	%	Number	%
North Carolina	1,093,337	29.8%	725,918	19.8%	79,734	2.2%	287,685	7.9%
Guilford	56,645	29.5%	35,178	18.3%	4,764	2.5%	16,703	8.7%

Source: American Community Survey, U.S. Census Bureau, 2007-2011 estimates.

- There were an estimated 1,093,337 households with their own children under the age of 18 in North Carolina according to 2007-2011 estimates, or about 30% of all households. Guilford County had a similar breakdown.
- Married couples with their own children under age 18 made up about 20% of all households.
- Households with male head of household without a wife present and with children under age 18 made up about 2.5% of all households and householders without a husband present and with children under age 18 made up about 9% of all households.

Language

Population Estimates (5 years of age and older) of those who Speak a Language Other than English at Home, North Carolina and CHNA Counties

Residence	Language Other Than English at Home		Spanish		Other Indo-European Languages		Asian & Pacific Islander Languages		Other Languages	
	Number	%	Number	%	Number	%	Number	%	Number	%
North Carolina	929,658	10.6%	624,448	7.1%	143,786	1.6%	123,104	1.4%	38,320	0.4%
Alamance	16,070	11.5%	13,256	9.5%	1,414	1.0%	1,213	0.9%	187	0.1%
Davidson	11,411	7.5%	8,563	5.6%	942	0.6%	1,503	1.0%	403	0.3%
Forsyth	44,145	13.6%	33,519	10.4%	5,666	1.8%	3,752	1.2%	1,208	0.4%
Guilford	53,748	11.9%	27,213	6.0%	10,242	2.3%	11,681	2.6%	4,612	1.0%
Randolph	13,924	10.6%	11,900	9.0%	1,108	0.8%	747	1.6%	169	0.1%
Rockingham	4,726	5.4%	4,115	4.7%	358	0.4%	241	0.3%	12	0.0%

Source: American Community Survey, U.S. Census Bureau, 2007-2011 estimates.

- Approximately 11% of the North Carolina population speaks a language other than English at home.
- Alamance, Forsyth, Guilford and Randolph counties reflect or slightly exceed this state trend.

- Approximately 5-8% of the population in Davidson and Rockingham counties speak a language other than English at home.
- Of those over age 5 living in Guilford County in 2007-2011, an estimated 11.9% spoke a language other than English at home.
- Of those speaking a language other than English at home, 6.0% spoke Spanish, 2.3% spoke another Indo-European language, 2.6% spoke an Asian and Pacific Islander language and 1.0% spoke some other language.

Veteran Status

Estimates of the Civilian Veteran Population for North Carolina and Guilford County

Residence	Civilian Veterans	
	Number	Percentage
North Carolina	743,377	10.5%
Guilford	33,758	9.1%

Source: American Community Survey, U.S. Census Bureau, 2007-2011 estimates.

- Guilford County reflects the estimated civilian veteran population of the state, about 10%.

Grandparents Living with and Responsible for Grandchildren under age 18 in North Carolina and Guilford County

Residence	Number of Grandparents Living with Grandchildren	Percentage of Grandparents Responsible for Grandchildren
North Carolina	98,634	50.2%
Guilford	8,570	50.8%

Source: American Community Survey, U.S. Census Bureau, 2007-2011 estimates.

- In North Carolina, an estimated 50.2% of the grandparents living with their grandchildren under age 18 are responsible for those grandchildren.
- Guilford County is similar, with 50.8% of the grandparents living with their grandchildren are responsible for those children.