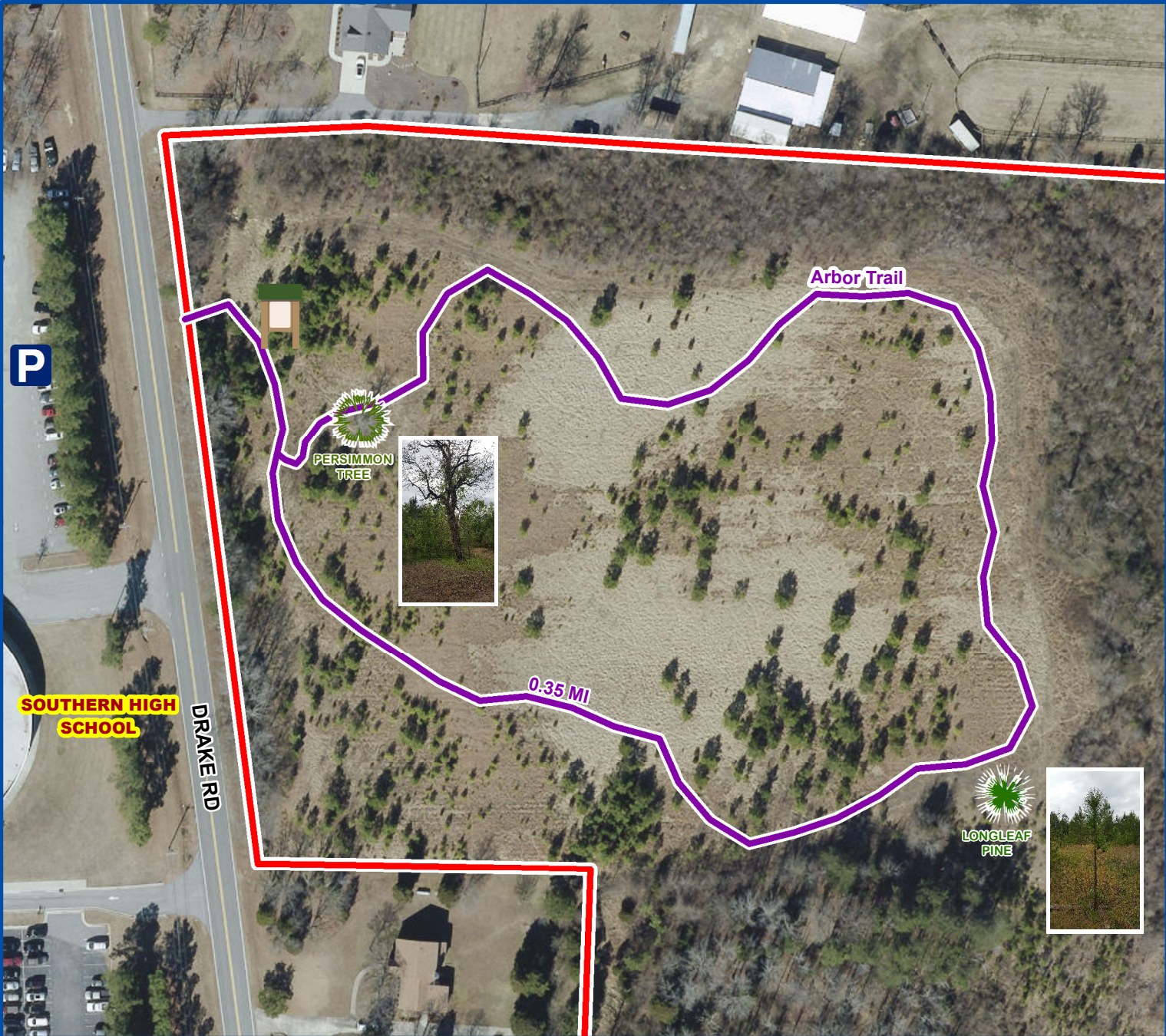


SAFERIGHT PRESERVE

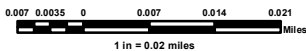


RULES AND REGULATIONS

HOURS OF OPERATION: DAWN TO DUSK

PROHIBITED:

- Unleashed pets
- Use of motorized vehicles such as ATVs
- Bicycling or horseback riding
- Consumption or possession of alcohol or illegal drugs
- Hunting or trapping
- Fishing
- Boating
- Camping
- Fires
- TRESPASSING ON NEIGHBORING PROPERTIES



CONTACT INFORMATION :

In the event of an **EMERGENCY** - Call 911
 For more information about this Park or any of the other Guilford County Parks - Call (336) 841-4751 or go to <http://www.townofguilford.com/parks/>

Legend

- | | | | | | |
|---|---|---|----------------|---|--------------------------|
|  | KIOSK (LAT: 35.57 0.976; LONG: -79.51 14.930) |  | LONGLEAF PINE |  | ARBOR TRAIL - 0.35 MILES |
|  | PARKING |  | PERSIMMON TREE |  | PRESERVE BOUNDARY |

