

2018 ORTHOIMAGERY

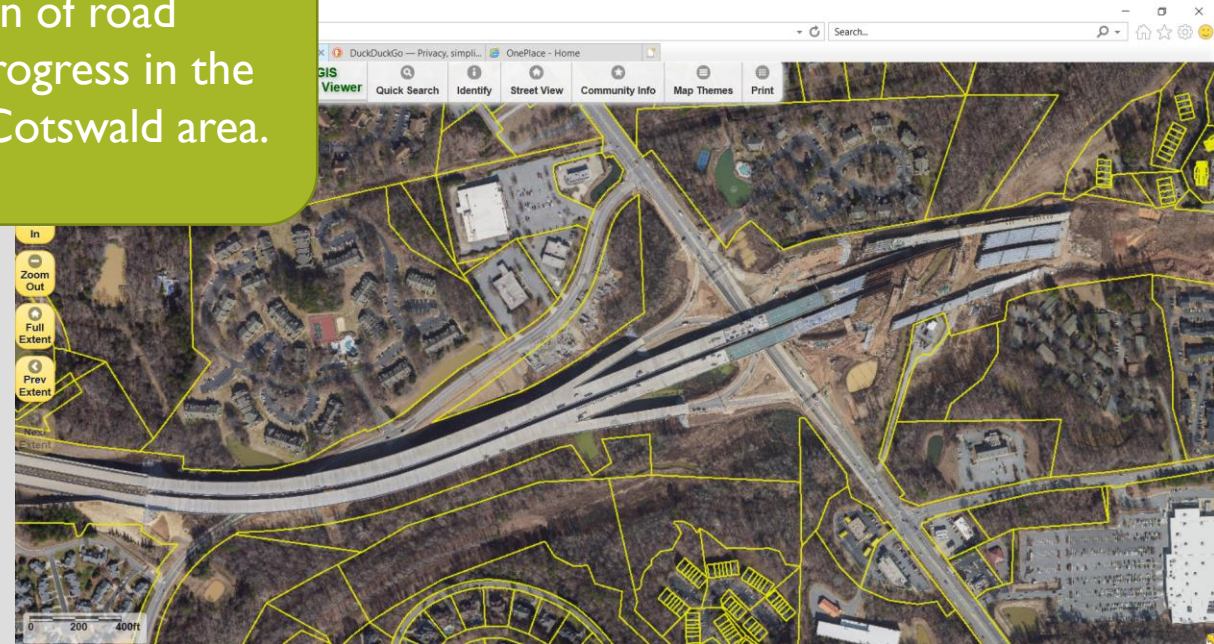
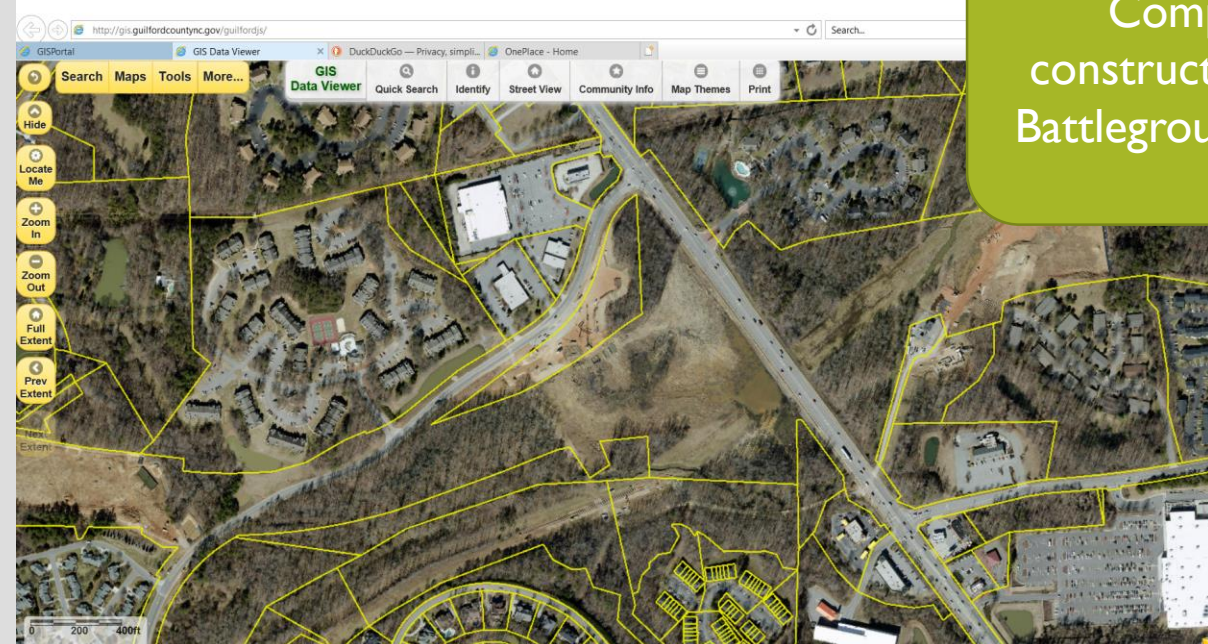
ORTHOPHOTOGRAPHY

We have recently updated our default base map from 2014 to the newly acquired 2018 orthoimagery. These images were obtained using 911 Board funding through a project coordinated by the NC Center for Geographic Information and Analysis (NC-CGIA).

2014

2018

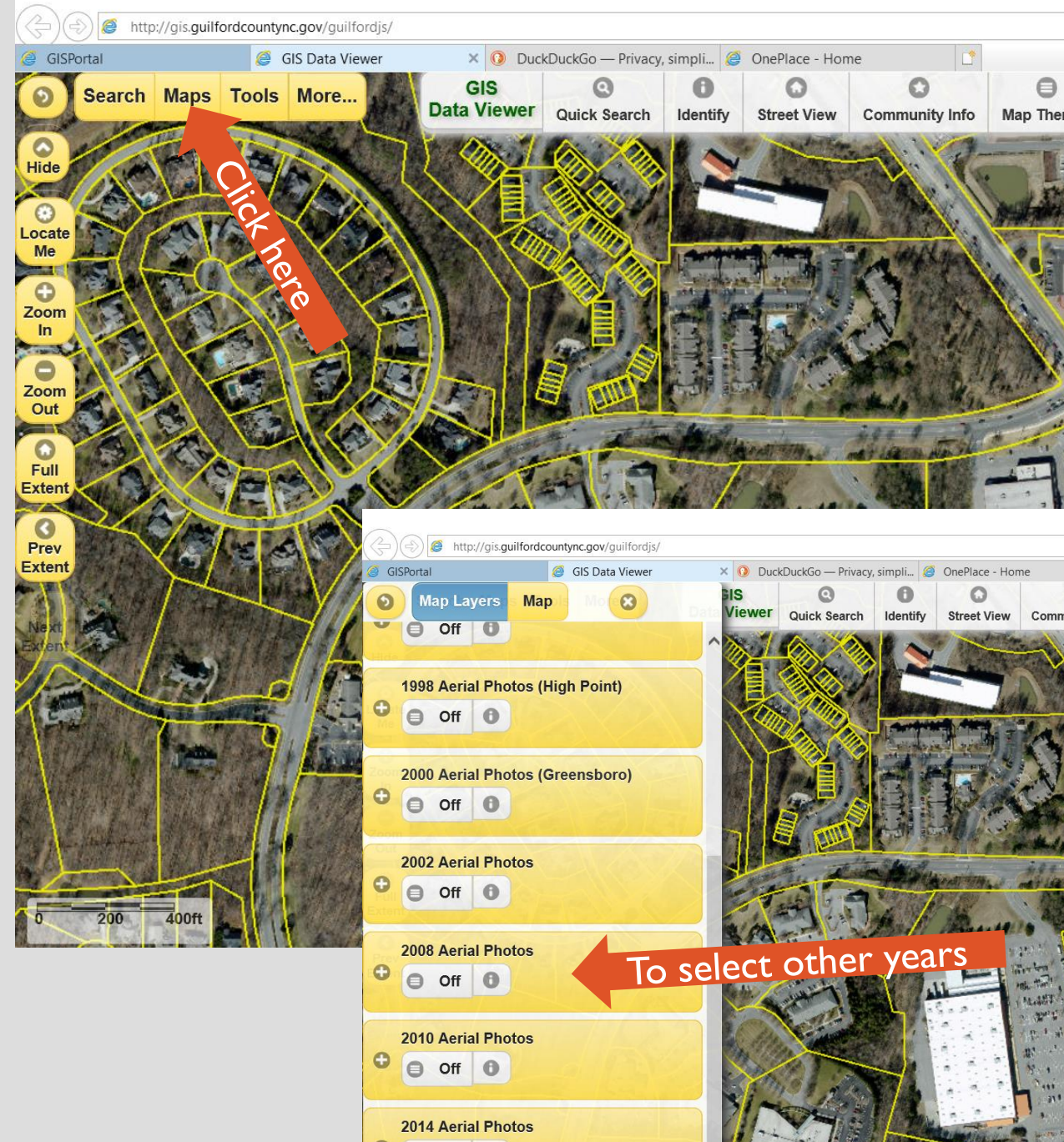
Comparison of road construction progress in the Battleground / Cotswald area.



ORTHOIMAGERY AVAILABILITY

In addition to the 2018 imagery, the GIS Data Viewer also provides the 1983, 1991, 1995, 1998, 2000, 2002, 2008, 2010 and 2014 series for viewing.

Other series, going back to 1937 are available through our [image download application](#). Our plans are to integrate these into GIS in the future.



NORTH CAROLINA ORTHOIMAGERY PROGRAM

For more information concerning the state-wide orthoimagery program, please click the image below.

NC Orthoimagery Program

Overview

2012-2015

2016-2019

Imagery Discovery

Cooperative Products

NEWS

North Carolina Orthoimagery



QUESTIONS?

- For other questions concerning the new orthoimagery or other features of the GIS Data Viewer, please contact the GIS Division of the Information Services Department at (336) 641-2549 or by email using gis@guilfordcountync.gov.
- Please visit our [website](#) for additional information regarding Guilford County Geographic Information Services Division initiatives.