

2019 OBLIQUE IMAGERY

OBLIQUE IMAGERY

- Oblique Imagery is aerial photography taken at an angle less than 90 degrees. In our application of the imagery, it allows for more detail to be seen regarding structures, underneath tree canopy and other land features than traditional nadir (top down) imagery provides.



- The angled images are collected County-wide in each of the cardinal directions at two different photo heights.
- Each location in the County has dozens of individual images available for it from multiple angles. This helps provide a clear view of almost any location.

IMAGE AVAILABILITY

To access our new imagery, as well as older flights from 2007 and 2015, select or identify an individual parcel and click on the blue 'Oblique Photos' hyperlink.

A new window will open with customized controls.

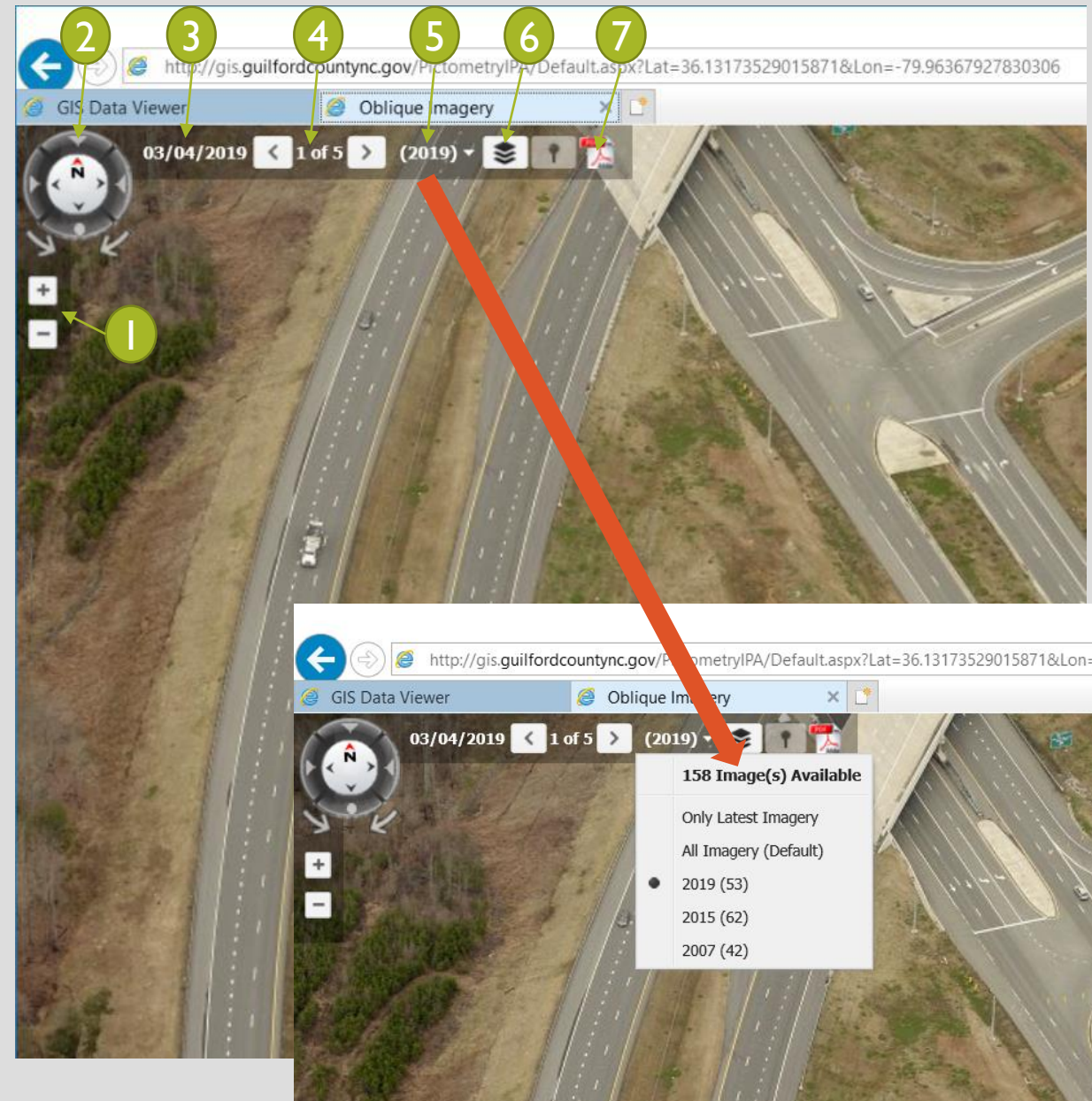
The screenshot shows the GIS Data Viewer interface for Guilford County, NC. The browser address bar displays <http://gis.guilfordcountync.gov/guilfordjs/>. The interface includes a navigation menu with options like 'Identify', 'Details', and 'Map'. The main map area shows a satellite view of a residential area with yellow parcel boundaries. A specific parcel is highlighted with an orange border. The left sidebar provides detailed information for this parcel, including its address (3441 Northeast Park Dr) and various property details. A red arrow points to the 'Oblique Photos' hyperlink in the sidebar.

Parcel Number	10
PIN	8828019610
Owner History	Card Image
Owner	GUILFORD COUNTY
Mail Address	PO BOX 3427
Mail City	GREENSBORO
Mail State	NC
Mail Zip	27402
Property Address	3441 NORTHEAST PARK DR
Legal Description	369.40AC NORTHEAST PARK PHASE I
Deed	005428-01627
Plat	
Condo	
Total Assessed	
Total Building Value	0
Total Out Building Value	
Total Land	

OBLIQUE VIEWER CONTROLS

Panning around the image is accomplished by clicking on the image, holding and dragging.

- 1 These buttons allow you to zoom in or out.
- 2 The Compass Tool allows you to move around from the default south view to see the east, north and west facing images. The 'dot' displays a straight down image. The curved arrows rotate the view in that direction.
- 3 The date of the current image.
- 4 The number of images available for this location, during this year, from this direction.
- 5 Available images per year. Clicking on the down arrow allows you to focus on a single year.
- 6 This options allows you to activate Street Name, contour or an external parcel layer.
- 7 This option allows you to export an image to a PDF. File for printing.



MULTIPLE IMAGES FROM DIFFERENT HEIGHTS

LOW-LEVEL
NEIGHBORHOOD IMAGES



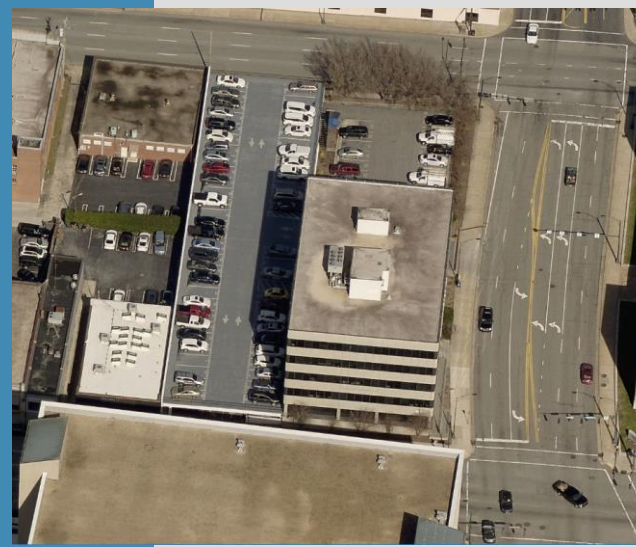
HIGH-LEVEL
COMMUNITY IMAGES



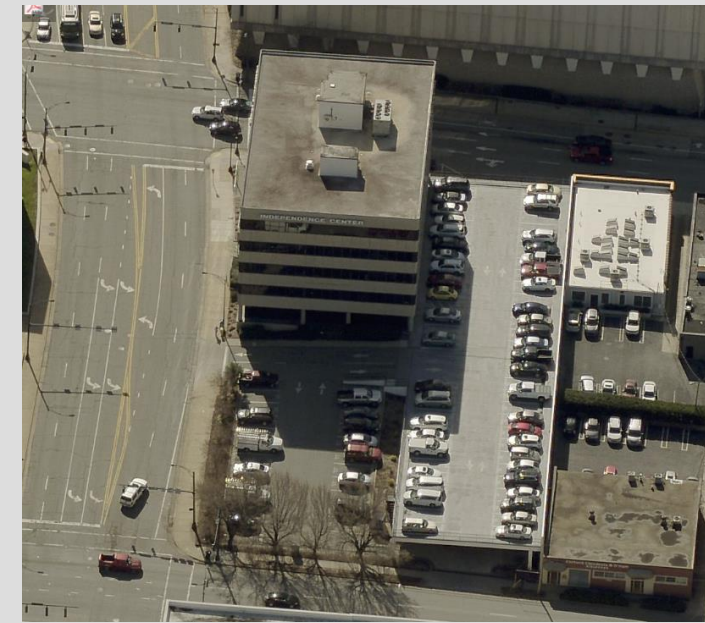
The viewing system will automatically change between the Neighborhood and Community level images as you zoom in and out. Also, as you pan around the individual images will change and alter the perspective of the viewing area. This can be disorienting.

One of the advantages of oblique imagery system we employ is the ability to view a location from all sides.

ALL SIDES VISIBLE



View From the South



View From the North

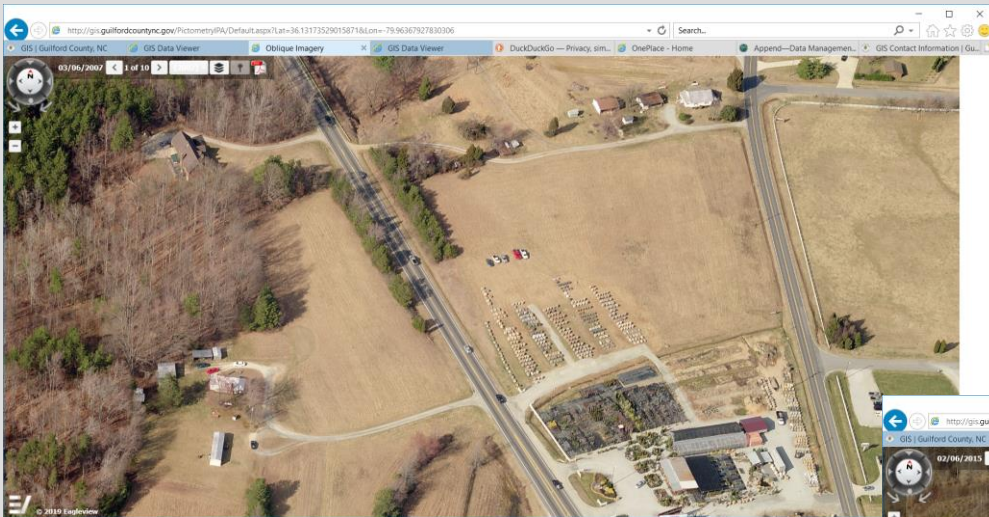


View From the West

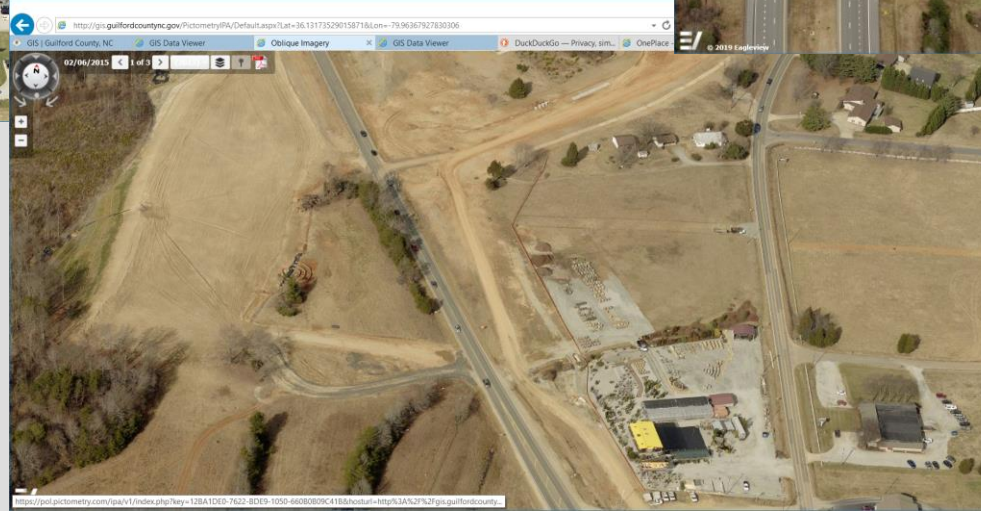


View From the East

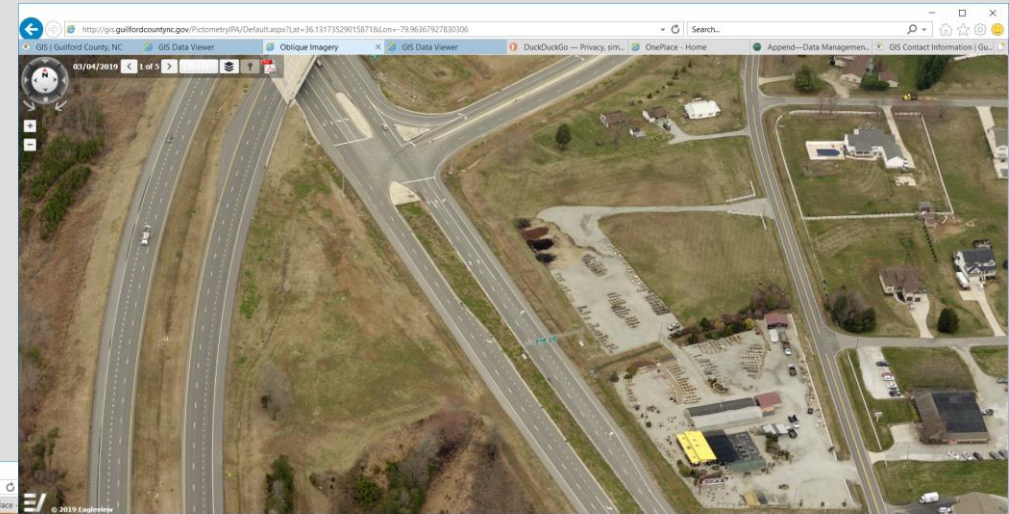
PHOTOGRAPHIC HISTORY



2008



2015



2019

As our image inventory continues to build, we gain historical perspective on development. These images show the growth of the Highway 68 Corridor.

QUESTIONS?

- For questions on the obliques or other features of the GIS Data Viewer, please contact the GIS Division of the Information Services Department at (336) 641-2549 or by email using gis@guilfordcountync.gov.
- Please visit our [website](#) for additional information regarding Guilford County Geographic Information Services initiatives.