

TUBERCULOSIS DATA BRIEF 2019



Tuberculosis (TB) is a communicable, potentially fatal disease that usually affects the lungs but can attack other parts of the body as well, including the kidneys, spine and brain. It is an air-borne infection that is spread when a person with an active case of TB breathes out the disease-causing bacteria, which are then inhaled by another person. TB is treatable, though new drug-resistant strains are appearing that are more difficult to treat. To prevent the disease from recurring in a drug-resistant form, nurses in the Guilford County TB control program use directly observed therapy protocols to ensure that patients are taking all medications as directed. In the last 20 years, TB rates have declined by two-thirds in NC and by half in Guilford County. Guilford County cases declined from 21 from 2017 to 2018.

Reportable Disease	2014		2015		2016		2017		2018	
	Number	Rate	Number	Rate	Number	Rate	Number	Rate	Number	Rate
Tuberculosis	20	3.9	21	4.1	19	3.6	21	4.0	17	3.2

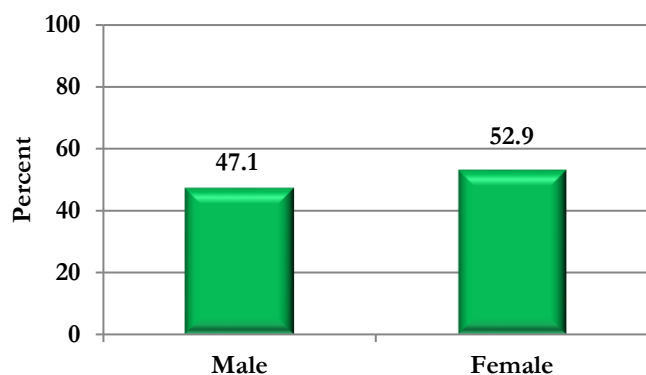
Source: North Carolina Electronic Disease Surveillance System (NCEDSS); Data downloaded on 01/09/2019.

Tuberculosis Cases and Rates by Race and Hispanic Status, Guilford County, 2018

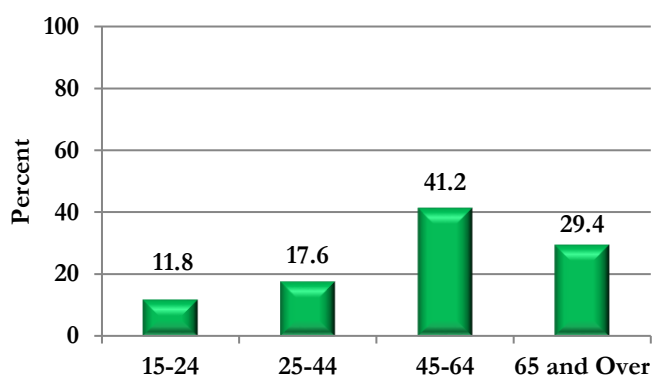
Race and Ethnicity	Number of Cases	Percent of Cases
Asian	11	64.7%
African-American	4	23.5%
White	2	14.3%
Race Total	14	100%
Hispanic*	2	11.8%

*Hispanics can be of any race.

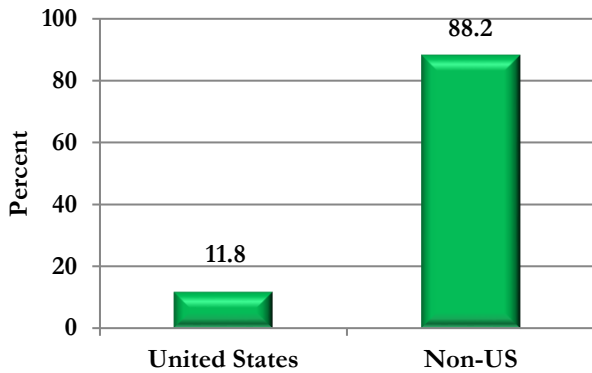
Percent of Tuberculosis Cases by Sex, 2018



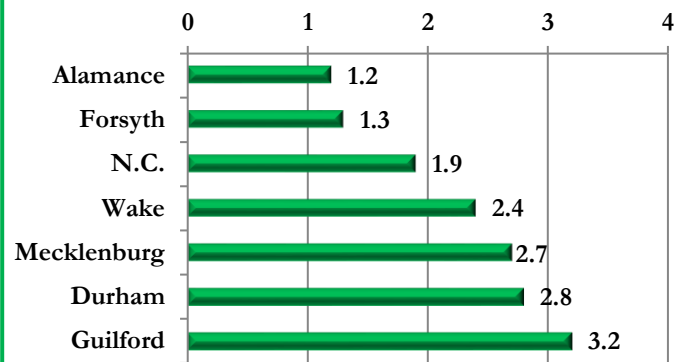
Percent of Tuberculosis Cases by Age Group, 2018



Country of Origin of Cases, 2018

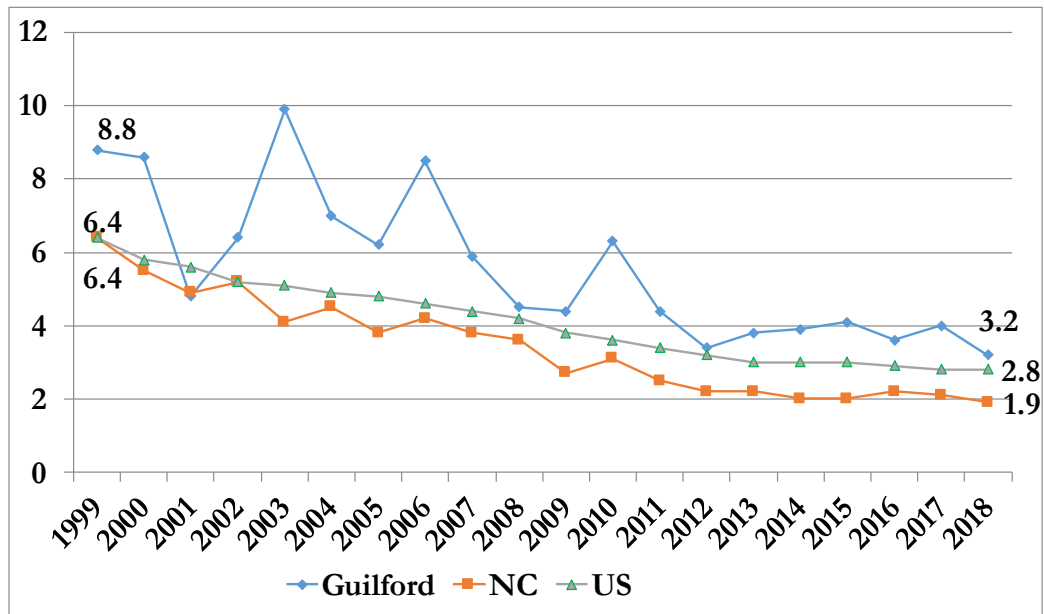


Tuberculosis Rates per 100,000 for Selected Counties and NC, 2018



Trends in Tuberculosis Incidence Rates Guilford County, NC and the US, 1999-2018

Rate per 100,000



Source: NC Electronic Disease Surveillance System (NC EDSS).

This brief was prepared by Health Surveillance & Analysis Unit of the Division of Public Health: Mark H. Smith, Ph.D., Epidemiologist and Laura Mroska, MPH, MSW, Community Health Educator

For more information about Guilford County health statistics, visit:

<https://www.guilfordcountync.gov/our-county/human-services/health-department/health-statistics>.