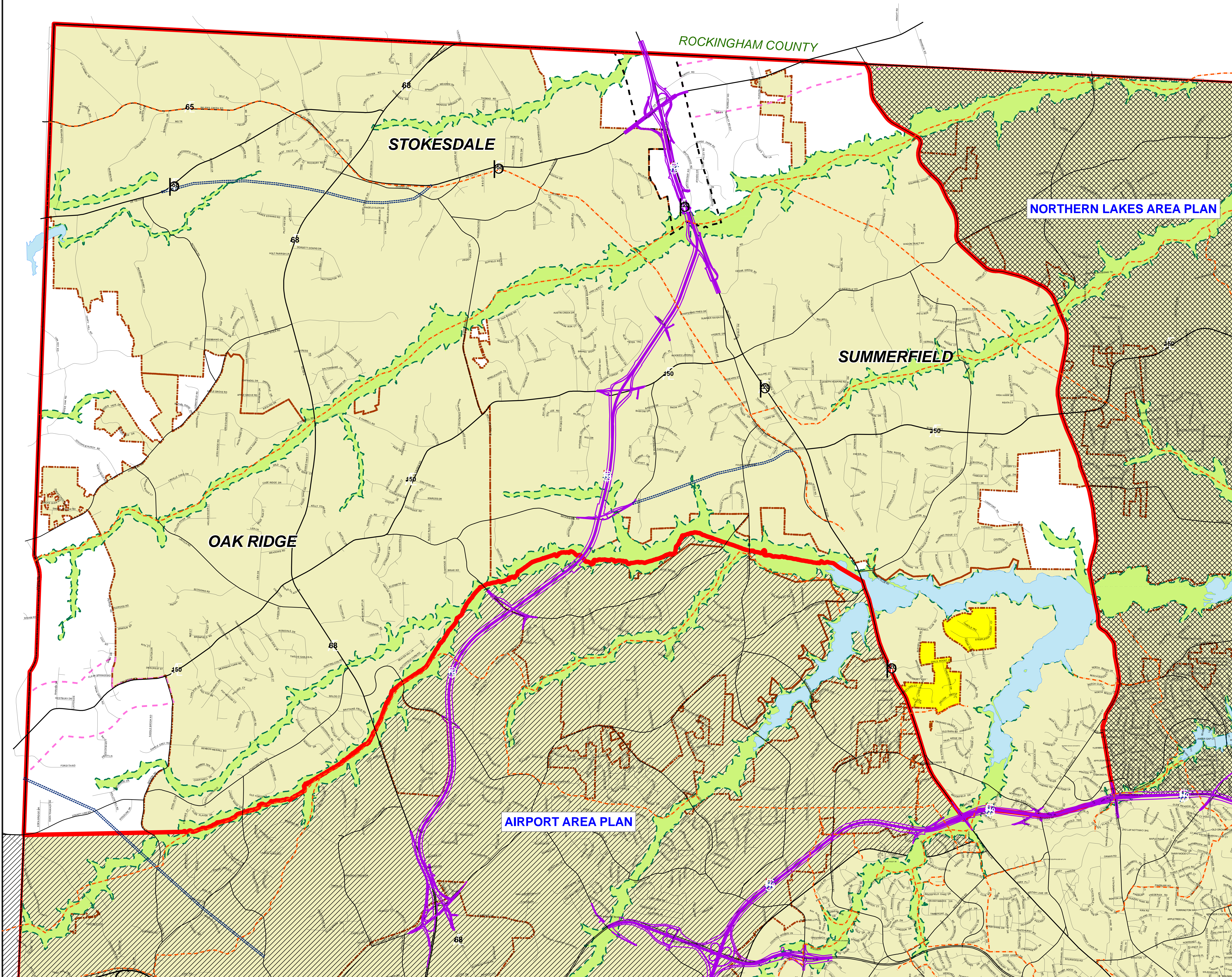


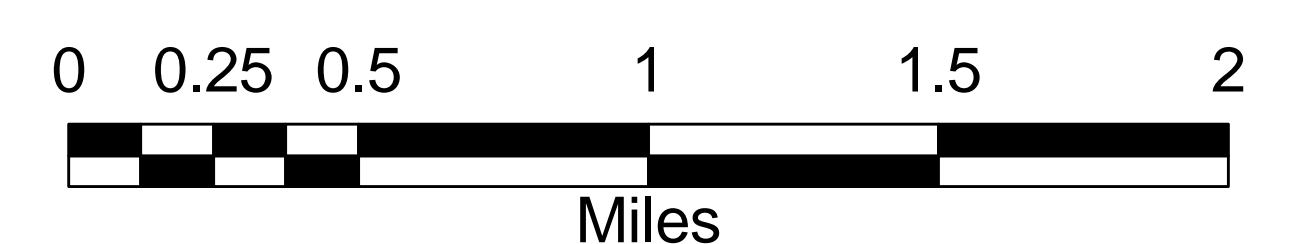
Northwest Area Plan



Future Land Use Update 2007

Legend

- AG Rural Residential
- Residential Single Family
- Greenway/Trail
- Proposed Trail
- Proposed Thoroughfare
- Proposed Freeway
- Proposed Scenic Corridor
- Existing Scenic Corridor
- County Line
- City Limits
- Lakes
- Northwest Area Plan
- Airport Area Plan
- Northern Lakes Area Plan
- Not in NWAP



NORTHWEST AREA PLAN UPDATE

EXECUTIVE SUMMARY BACKGROUND:

On September 21, 2006, the Guilford County Board of Commissioners adopted the Guilford County Comprehensive Plan. Policy 1.1.2 of the Plan states:

Policy 1.1.2: Existing Area Plans will be updated to reflect current jurisdictional boundaries, roadway improvements (existing and proposed), and emerging commercial areas, based on the following schedule:

*Southwest (1989) – Fall 2006
Rock Creek (1988) – Winter 2007
Alamance (1994) – Spring 2007
Northwest (1998) – Summer 2007
Northeast (2000) – Summer 2007
Airport (2002) – Fall 2007
Southern (2002) – Fall 2007*

Pursuant to Policy 1.1.2, the Guilford County Planning Department began working on an update of the Northwest Area Plan (originally adopted in 1998). Guilford County Planning Staff evaluated the area and began working towards the update of the Plan.

PROCESS

Guilford County Planning staff identified areas where plan modifications were needed. A public walk through meeting was held at the Oak Ridge Town Hall on September 20, 2007 from 4pm to 7pm to allow public input into the process, and approximately 20 citizens attended. When the final map revisions are made, staff will present the Plan for a public hearing at the November 14, 2007 Planning Board Meeting. The Plan will then be presented for a final public hearing before the Guilford County Board of Commissioners.

PLAN ALTERATIONS

1. Plan Boundary and Area

Significant portions of the plan area have been reduced through the incorporations and approval of Town Plans for Oak Ridge, Stokesdale, and Summerfield. In addition, some overlap existed between the Northwest Area Plan and the Airport Area Plan; therefore, portions of the Northwest Area Plan were removed in favor of the more recent Airport Area Plan. Two areas along US 220 near Bur-mil Park, which are, not covered by the original plan but surrounded by the City of Greensboro and Town of Summerfield were added. No recognized current land uses for this area were changed.

2. Transportation Elements

The future I-73/I-74 Connector approved with the 2004 Urban Area Thoroughfare Plan, which connects Bryan Boulevard to U.S. Highway 52 North and I-40, is shown on the southern portion of the plan crossing County Line Road.

3. Land Use Elements

No Land Use Classification changes are being proposed.